

ERRTH TWO DEPARTURE

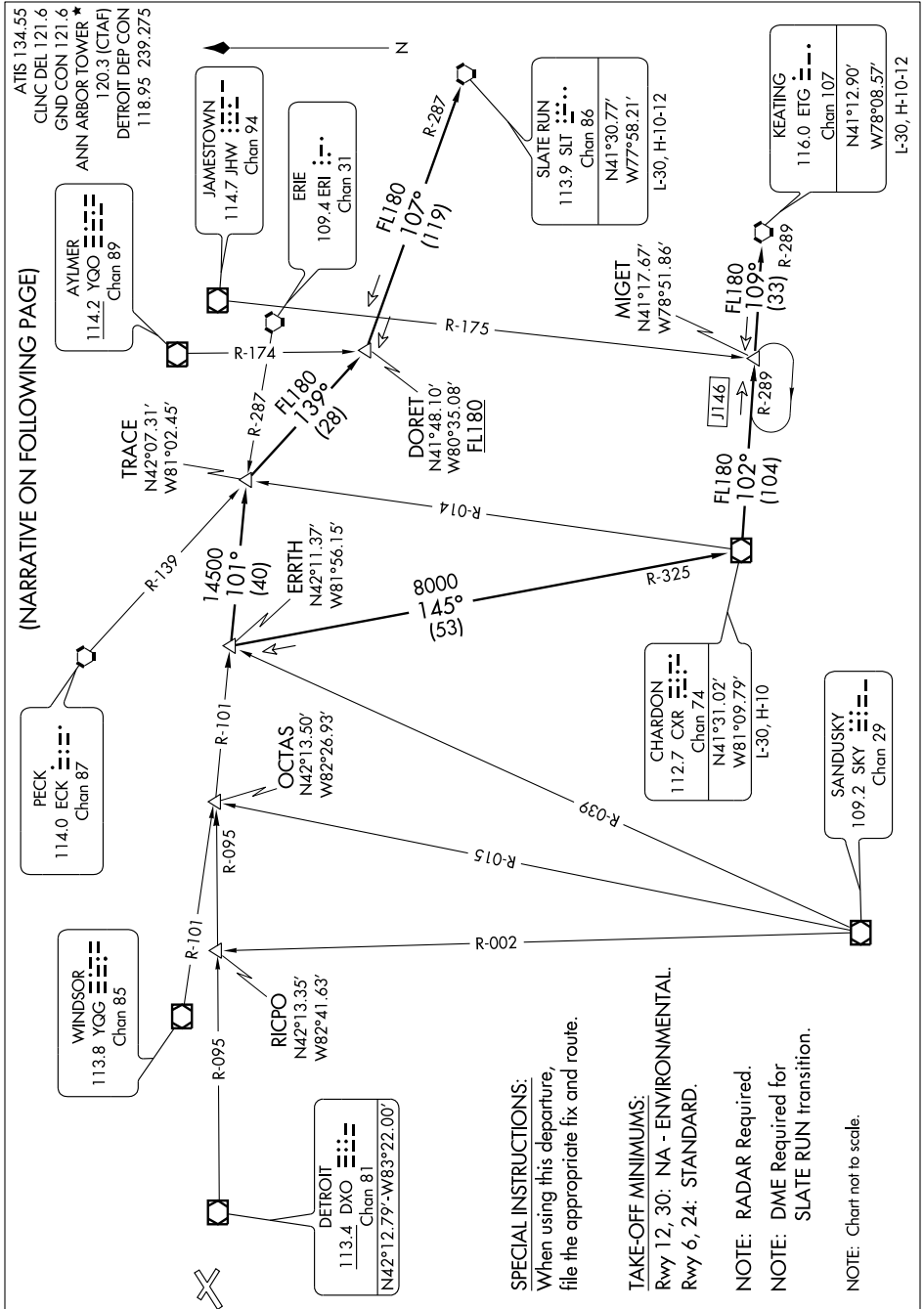
SL-5506 (FAA)

ANN ARBOR MUNI (ARB)

ANN ARBOR, MICHIGAN

EC-1, 22 OCT 2009 to 19 NOV 2009

(NARRATIVE ON FOLLOWING PAGE)



SPECIAL INSTRUCTIONS:
 When using this departure, file the appropriate fix and route.

TAKE-OFF MINIMUMS:
 Rwy 12, 30: NA - ENVIRONMENTAL.
 Rwy 6, 24: STANDARD.

NOTE: RADAR Required.
NOTE: DME Required for SLATE RUN transition.

NOTE: Chart not to scale.

EC-1, 22 OCT 2009 to 19 NOV 2009

ERRTH TWO DEPARTURE

ANN ARBOR, MICHIGAN

ANN ARBOR MUNI (ARB)