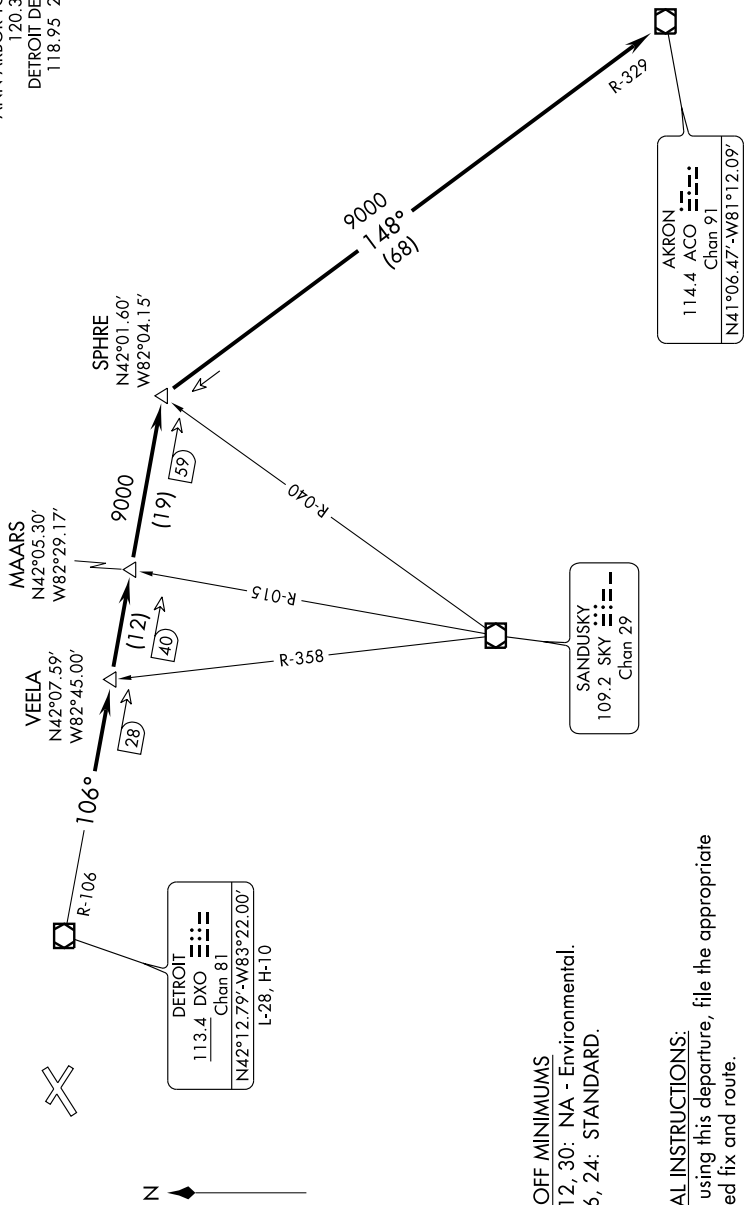


AKRON TWO DEPARTURE

ATIS 134.55
 CLINC DEL 121.6
 GND CON 121.6
 ANN ARBOR TOWER * 120.3 (CTAF)
 DETROIT DEP CON 118.95 239.275

EC-1, 22 OCT 2009 to 19 NOV 2009



TAKE-OFF MINIMUMS
 Rwys 12, 30: NA - Environmental.
 Rwys 6, 24: STANDARD.

SPECIAL INSTRUCTIONS:
 When using this departure, file the appropriate depicted fix and route.

NOTE: Radar Required.
 NOTE: Chart not to scale.

(NARRATIVE ON FOLLOWING PAGE)

EC-1, 22 OCT 2009 to 19 NOV 2009

AKRON TWO DEPARTURE