

FORT BELVOIR, VIRGINIA

# RNAV (GPS) RWY 32

APCH CRS	Rwy Idg	4727
323°	TDZE	68
	Arpt Elev	73

AL-5504 [USA]

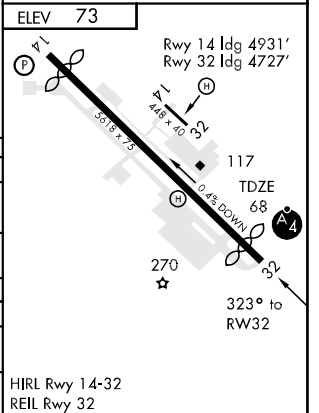
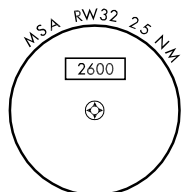
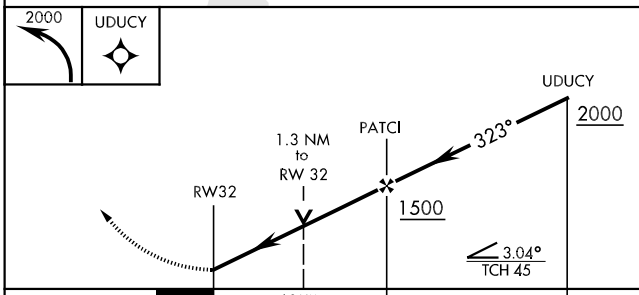
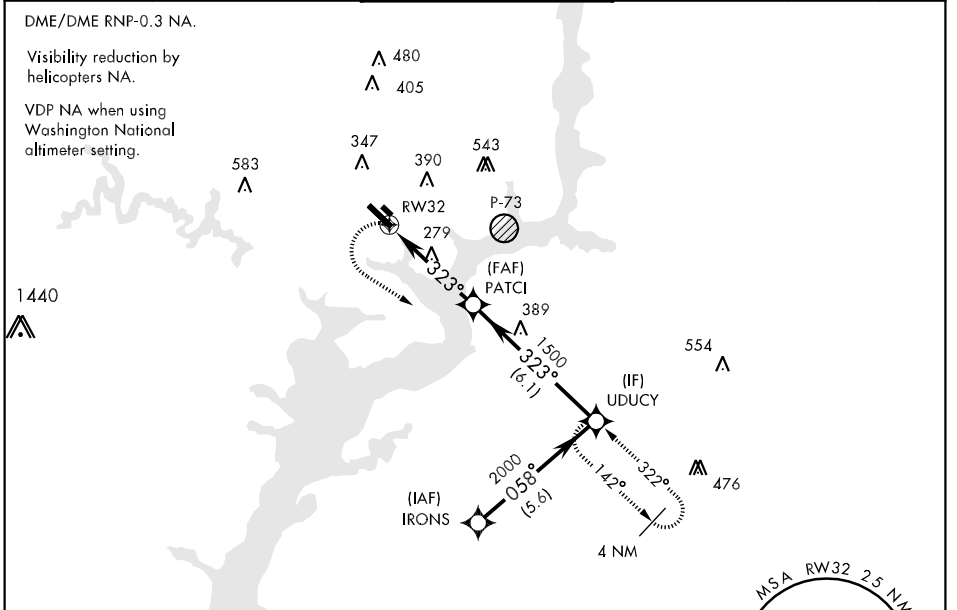
DAVISON AAF (KDAV)

▼ \* For inop MALSF, increase CAT D vis to 1½ miles.  
▼ \*\* If local altimeter setting not received, use Washington National altimeter setting.

MALSF

MISSED APPROACH: Climbing left turn to 2000 direct UDUY and hold.

ATIS	POTOMAC APP CON	DAVISON TOWER ★	GND CON	CLNC DEL	PAR
128.175 230.0	119.85 322.3	126.3 (CTAF) 0 229.4	121.9 245.2	245.2	



CATEGORY	A	B	C	D
LNVA MDA *	540/40	472 (500-¾)	540/50 472 (500-1)	540/60 472 (500-1¼)
CIRCLING	740-1	667 (700-1)	740-1¾ 667 (700-1¾)	760-2¼ 687 (700-2¼)
S-PAR 32 *	333/40 265		(300-¾)	GS 3.00°
** WASHINGTON NATIONAL ALTIMETER SETTING MINIMUMS				
LNVA MDA *	580/40	512 (600-¾)	580/60 512 (600-1¼)	580-1½ 512 (600-1½)
CIRCLING	780-1	707 (800-1)	780-2 707 (800-2)	800-2¼ 727 (800-2¼)

FORT BELVOIR, VIRGINIA 38° 43'N-77° 11'W DAVISON AAF (KDAV)

Orig 08325

# RNAV (GPS) RWY 32

NE-3, 22 OCT 2009 to 19 NOV 2009

NE-3, 22 OCT 2009 to 19 NOV 2009