

FORT BELVOIR, VIRGINIA

RNAV (GPS) RWY 14

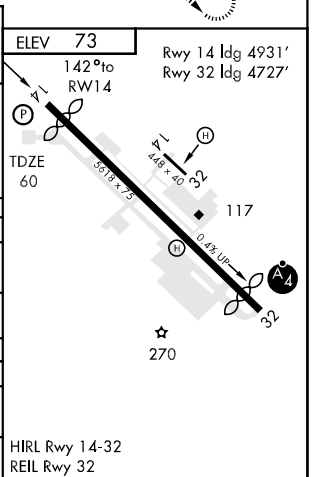
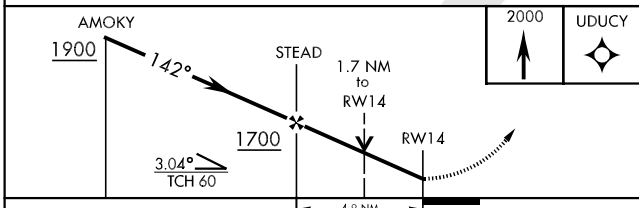
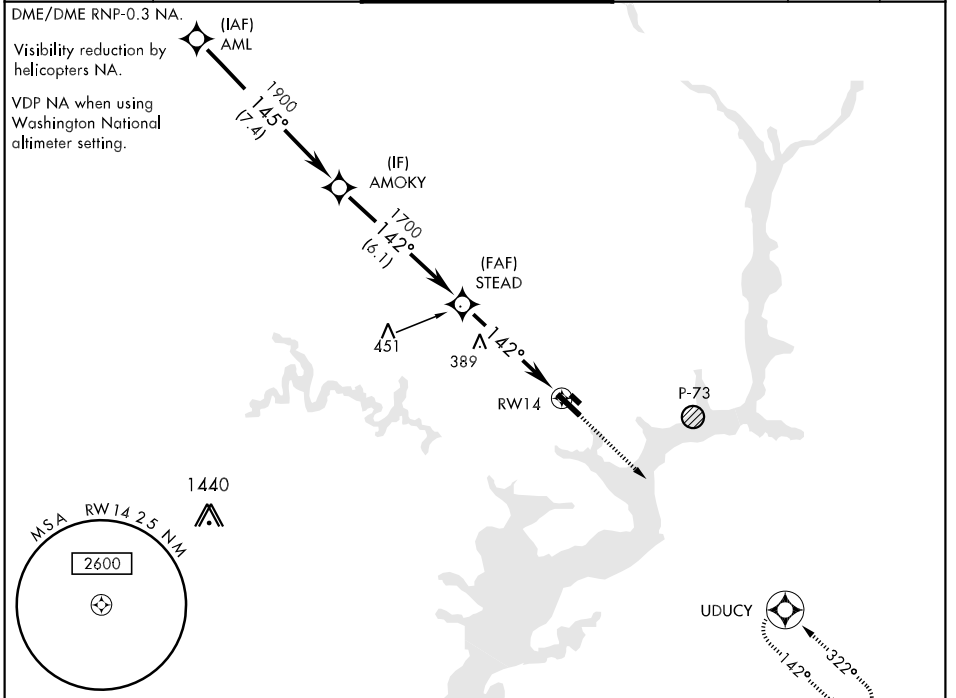
APCH CRS 142°	Rwy ldg 4931
	TDZE 60
	Arpt Elev 73

AL-5504 [USA]

DAVISON AAF (KDAV)

▽ * If local altimeter setting not received, use Washington
▲ N/A National altimeter setting. MISSED APPROACH: Climb to 2000 direct UDUY and hold.

ATIS 128.175 230.0	POTOMAC APP CON 119.85 322.3	DAVISON TOWER ★ 126.3 (CTAF) 0229.4	GND CON 121.9 245.2	CLNC DEL 245.2	PAR
------------------------------	--	---	-------------------------------	--------------------------	-----



CATEGORY	A	B	C	D
RNAV MDA	660-1	600 (600-1)	660-1½ 600 (600-1½)	660-1¾ 600 (600-1¾)
CIRCLING	740-1	667 (700-1)	740-1¾ 667 (700-1¾)	760-2¼ 687 (700-2¼)
S-PAR 14	635-2 575 (600-2)		GS 3.00°	
* WASHINGTON NATIONAL ALTIMETER SETTING MINIMUMS				
RNAV MDA	680-1	620 (700-1)	680-1¾ 620 (700-1¾)	680-2 620 (700-2)
CIRCLING	780-1	707 (800-1)	780-2 707 (800-2)	800-2¼ 727 (800-2¼)

FORT BELVOIR, VIRGINIA 38° 43'N-77° 11'W DAVISON AAF (KDAV)
 Amdt 1 09099

RNAV (GPS) RWY 14

NE-3, 22 OCT 2009 to 19 NOV 2009

NE-3, 22 OCT 2009 to 19 NOV 2009