

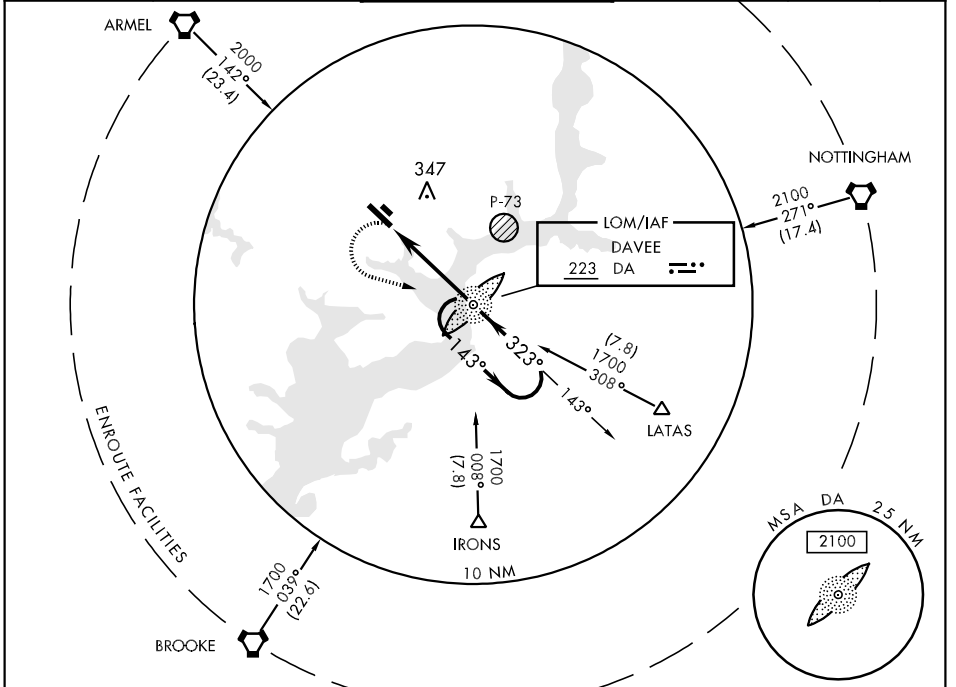
DA LOM <b>223</b>	APCH CRS <b>323°</b>	Rwy ldg TDZE Arpt Elev <b>4727</b> <b>68</b> <b>73</b>	AL-5504 [USA]	DAVISON AAF (KDAV)
----------------------	-------------------------	---	---------------	--------------------

**▼** \* For inop MALSF, increase S-32 CAT D vis to 2 1/4 miles.  
 \*\*\* If local altimeter setting not received, use Washington National altimeter setting.

**MALSF**

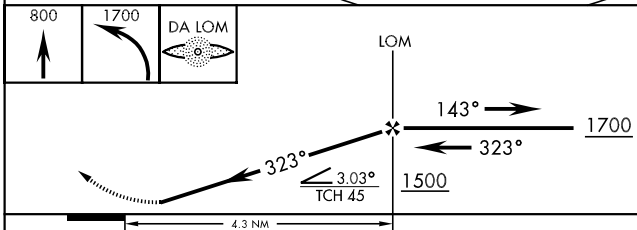
**MISSED APPROACH:** Climb to 800 then climbing left turn to 1700 direct DA LOM and hold.

ATIS <b>128.175 230.0</b>	POTOMAC APP CON <b>119.85 322.3</b>	DAVISON TOWER ★ <b>126.3 (CTAF) 0 229.4</b>	GND CON <b>121.9 245.2</b>	CLNC DEL <b>245.2</b>	PAR
------------------------------	--	--	-------------------------------	--------------------------	-----



NE-3, 22 OCT 2009 to 19 NOV 2009

NE-3, 22 OCT 2009 to 19 NOV 2009



CATEGORY	A	B	C	D
S-32 *	740/40	672 (700-3/4)	740-1 3/4 672 (700-1 3/4)	740-2 672 (700-2)
CIRCLING	740-1	667 (700-1)	740-1 3/4 667 (700-1 3/4)	760-2 1/4 687 (700-2 1/4)
S-PAR 32	333/40 265		(300-3/4) GS 3.00°	
<b>** WASHINGTON NATIONAL ALTIMETER SETTING MINIMUMS</b>				
S-32 *	780/40	712 (800-3/4)	780-1 3/4 712 (800-1 3/4)	780-2 712 (800-2)
CIRCLING	780-1	707 (800-1)	780-2 707 (800-2)	800-2 1/4 727 (800-2 1/4)

