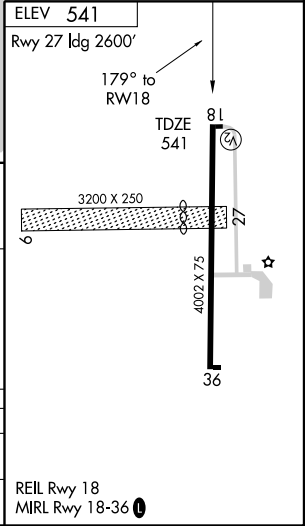
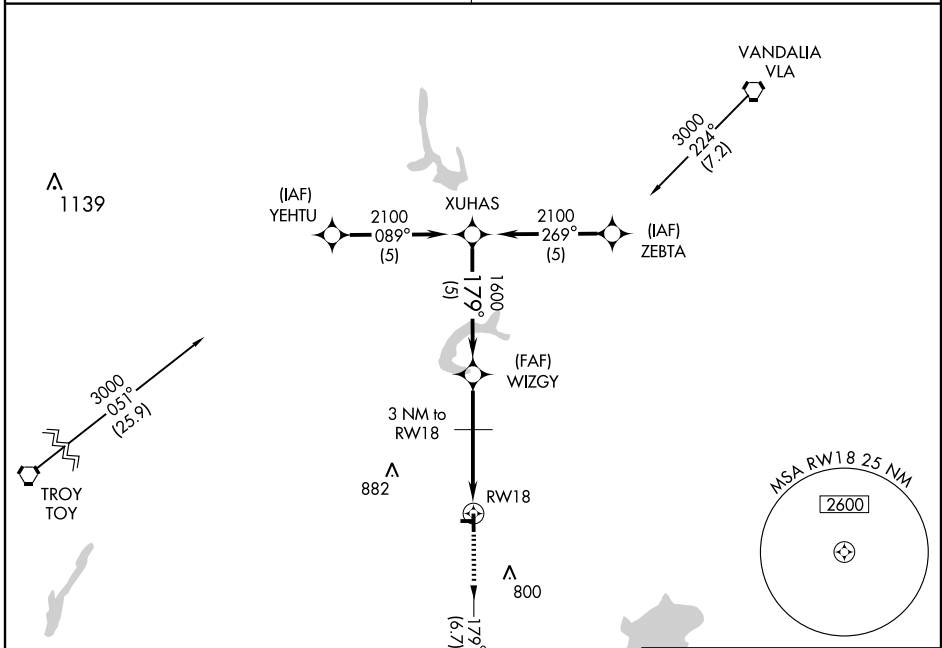


GPS RWY 18

GREENVILLE (G.R.E)

APP CRS	Rwy Idg	4002
179°	TDZE	541
	Apt Elev	541

<p>▲ NA Use Scott AFB/Midamerica altimeter setting.</p>	<p>MISSED APPROACH: Climb to 1800 via 179° course to SIPIF WP and hold.</p>
<p>KANSAS CITY CENTER 127.7 317.7</p>	<p>UNICOM 123.05 (CTAF) 0</p>



	XUHAS	WIZGY	3 NM to RW18	1800	SIPIF
Procedure Turn NA	2100	1600	1260	1800	SIPIF
	5 NM	2 NM	3 NM		

CATEGORY	A	B	C	D
S-18	980-1 439 (500-1)		980-1¼ 439 (500-1¼)	980-1½ 439 (500-1½)
CIRCLING	1040-1 499 (500-1)		1040-1½ 499 (500-1½)	1240-2 699 (700-2)

REIL Rwy 18
MIRL Rwy 18-36 0

EC-3, 22 OCT 2009 to 19 NOV 2009

EC-3, 22 OCT 2009 to 19 NOV 2009