

CEDARTOWN, GEORGIA

AL-5501 (FAA)

VORTAC RMG 115.4 Chan 101	APP CRS 188°	Rwy Idg TDZE Apt Elev	N/A N/A 973
---	------------------------	-----------------------------	--

CEDARTOWN/
POLK COUNTY AIRPORT- CORNELIUS MOORE FIELD (4A4)

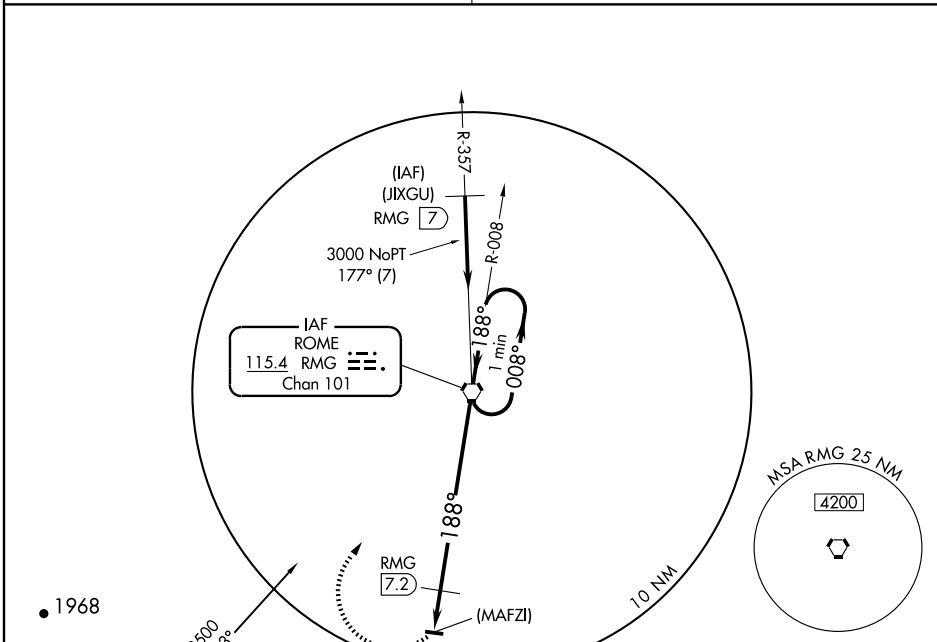
VOR or GPS-A

▼ Obtain local altimeter setting on CTAF; if not received, use
▲ NA Cartersville altimeter setting and increase all MDAs 80 feet.

MISSED APPROACH: Climbing right turn to 3000 direct RMG VORTAC and hold.

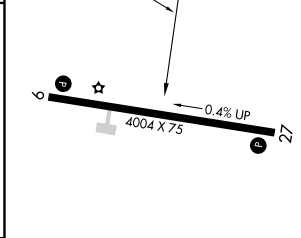
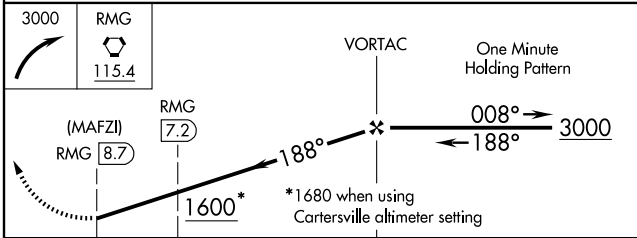
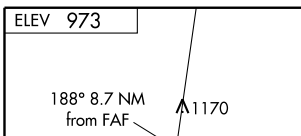
ATLANTA CENTER
133.8 353.7

UNICOM
122.8 (CTAF) 0



SE-4, 22 OCT 2009 to 19 NOV 2009

SE-4, 22 OCT 2009 to 19 NOV 2009



CATEGORY	A	B	C	D
CIRCLING	1600-1 627 (700-1)		1600-1¾ 627 (700-1¾)	1600-2 627 (700-2)
DME MINIMUMS				
CIRCLING	1520-1 547 (600-1)		1540-1½ 567 (600-1½)	1540-2 567 (600-2)

FAF to MAP 8.7 NM					
Knots	60	90	120	150	180
Min:Sec	8:42	5:48	4:21	3:29	2:54

CEDARTOWN, GEORGIA
Amdt 12B 09099

CEDARTOWN/ POLK COUNTY AIRPORT- CORNELIUS MOORE FIELD (4A4)

34° 01' N - 85° 09' W

VOR or GPS-A