

CEDARTOWN, GEORGIA

AL-5501 (FAA)

VOR/DME RNAV or GPS RWY 9

CEDARTOWN/
POLK COUNTY AIRPORT- CORNELIUS MOORE FIELD (4A4)

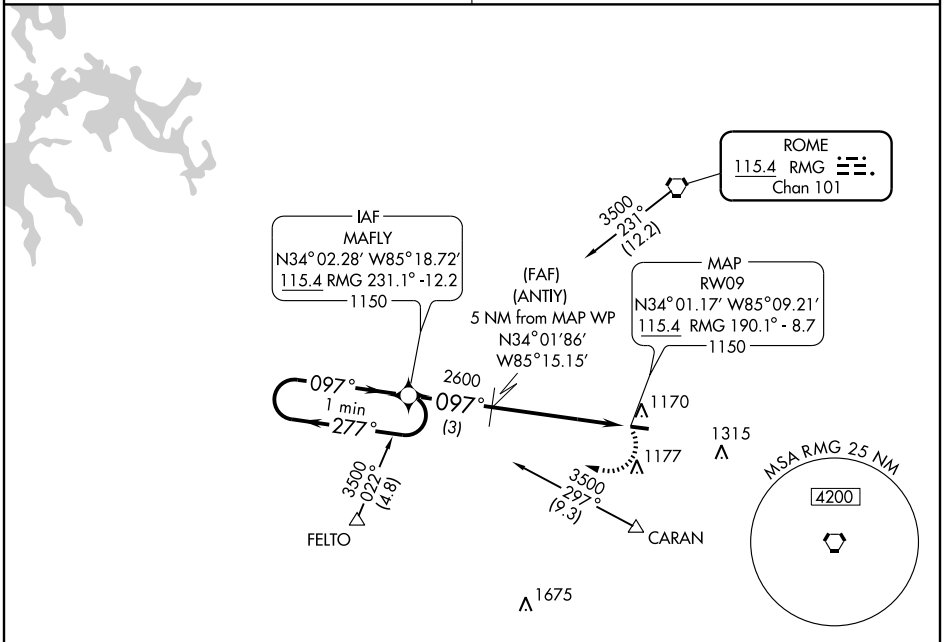
VORTAC RMG 115.4 Chan 101	APP CRS 097°	Rwy Idg TDZE Apt Elev	4004 973 973
---	------------------------	-----------------------------	---

NA Obtain local altimeter setting on CTAF; if not received, use Cartersville altimeter setting and increase all MDAs 80 feet.

MISSED APPROACH: Climbing right turn to 3500 direct MAFLY WP and hold.

ATLANTA CENTER **133.8 353.7**

UNICOM **122.8 (CTAF)**



2140

ELEV 973

△ 1170

One Minute Holding Pattern

MAFLY WP

(ANTIY) 5 NM from MAP WP

3500 ← 277° / 097° →

2600

097°

2.98°

RW09 MAP WP

3500 MAFLY

097° to MAP WP

TDZE 973

4004 X 75

0.4% UP

CATEGORY	A	B	C	D
S-9	1520-1	547 (600-1)	1520-1½ 547 (600-1½)	1520-1¾ 547 (600-1¾)
CIRCLING	1520-1	547 (600-1)	1540-1½ 567 (600-1½)	1540-2 567 (600-2)

MIRL Rwy 9-27

CEDARTOWN, GEORGIA
Amdt 2B 09099

CEDARTOWN/ POLK COUNTY AIRPORT- CORNELIUS MOORE FIELD (4A4)
34° 01' N - 85° 09' W

VOR/DME RNAV or GPS RWY 9

SE-4, 22 OCT 2009 to 19 NOV 2009

SE-4, 22 OCT 2009 to 19 NOV 2009