

CEDARTOWN, GEORGIA

AL-5501 (FAA)

VORTAC RMG 115.4 Chan 101	APP CRS 277°	Rwy Idg 4004 TDZE 973 Apt Elev 973
---	------------------------	---

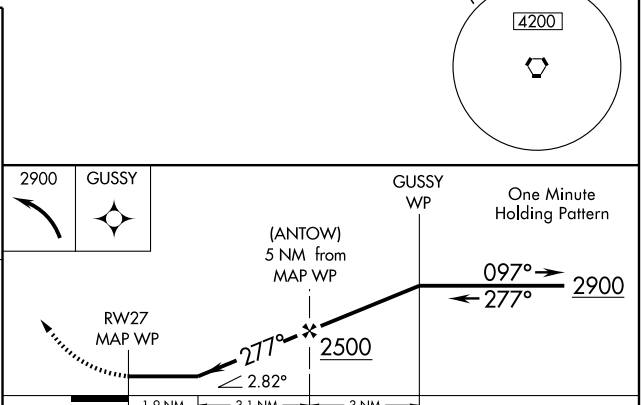
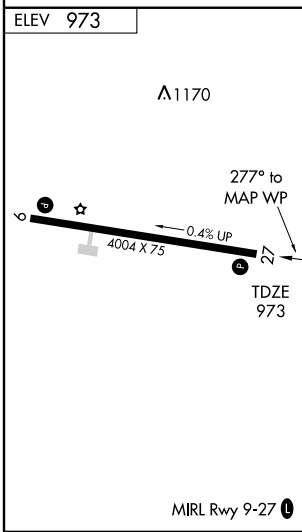
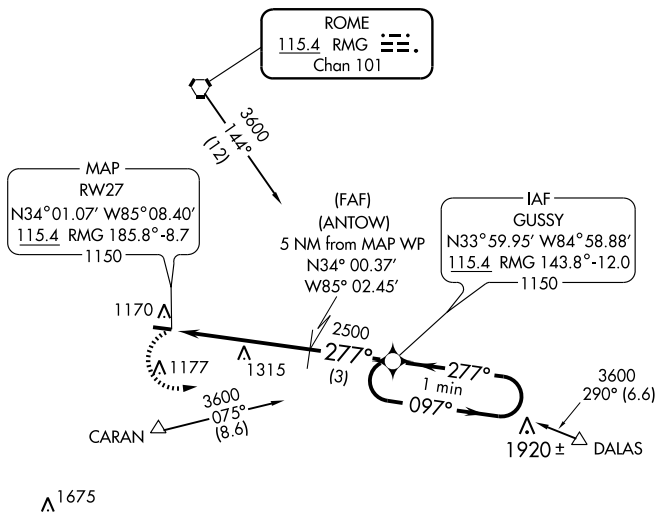
VOR/DME RNAV or GPS RWY 27

CEDARTOWN/
POLK COUNTY AIRPORT- CORNELIUS MOORE FIELD (4A4)

NA Obtain local altimeter setting on CTAF; if not received, use Cartersville altimeter setting and increase all MDAs 80 feet.

MISSED APPROACH: Climbing left turn to 2900 direct GUSSY WP and hold.

ATLANTA CENTER 133.8 353.7	UNICOM 122.8 (CTAF)
--------------------------------------	-------------------------------



CATEGORY	A	B	C	D
S-27	1560-1 587 (600-1)		1560-1½ 587 (600-1½)	1560-1¾ 587 (600-1¾)
CIRCLING	1560-1 587 (600-1)		1560-1½ 587 (600-1½)	1560-2 587 (600-2)

CEDARTOWN, GEORGIA
Amdt 2A 09099

CEDARTOWN/ POLK COUNTY AIRPORT- CORNELIUS MOORE FIELD (4A4)
34°01'N - 85°09'W **VOR/DME RNAV or GPS RWY 27**

SE-4, 22 OCT 2009 to 19 NOV 2009

SE-4, 22 OCT 2009 to 19 NOV 2009