

ST. MARYS, PENNSYLVANIA

AL-5500 (FAA)

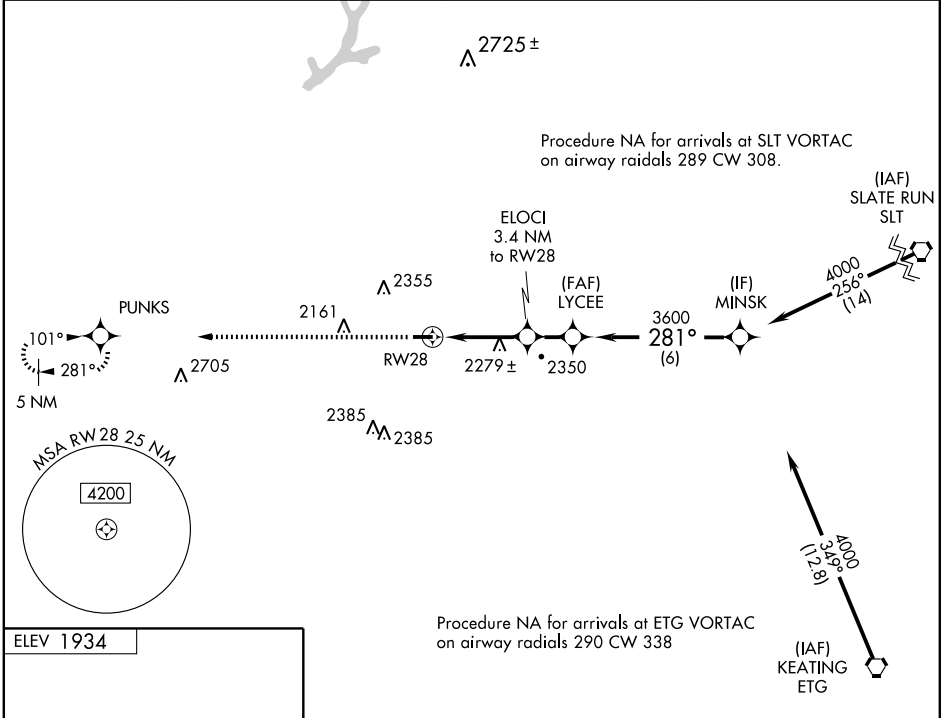
WAAS CH <b>82302</b> <b>W28A</b>	APP CRS <b>281°</b>	Rwy Idg TDZE Apt Elev	<b>4300</b> <b>1934</b> <b>1934</b>
--	------------------------	-----------------------------	---

# RNAV (GPS) RWY 28

ST. MARYS MUNI (OYM)

<p><b>▽</b> DME/DME RNP-0.3 NA. Inoperative table does not apply to LPV all Cats or LNAV Cat C. VDP NA when using Bradford altimeter setting.</p> <p><b>▲</b> NA If local altimeter not received, use Bradford altimeter setting and increase DA to 2417 and all MDAs 240 feet.</p>	<p>MALS</p>	<p>MISSED APPROACH: Climb to 4000 direct PUNKS and hold.</p>
---	-------------	--

AWOS-3 <b>118.05</b>	CLEVELAND CENTER <b>124.325 353.85</b>	ALTOONA CLNC DEL <b>121.3</b>	UNICOM <b>122.7 (CTAF)</b>
-------------------------	---	----------------------------------	-------------------------------



NE-4, 22 OCT 2009 to 19 NOV 2009

NE-4, 22 OCT 2009 to 19 NOV 2009

	4000	Procedure Turn NA		
<p>* LNAV only</p>	<p>2.1 NM to RW28</p>	<p>1.3 NM to LYCEE</p>	<p>1.6 NM to MINSK</p>	<p>6 NM to 4000</p>
CATEGORY	A	B	C	D
LPV DA	2194-1		260 (300-1)	
LNAV MDA	2640- <sup>3</sup> / <sub>4</sub>	706 (800- <sup>3</sup> / <sub>4</sub> )	2640-2 706 (800-2 <sup>1</sup> / <sub>4</sub> )	2640-2 <sup>1</sup> / <sub>4</sub> 706 (800-2 <sup>1</sup> / <sub>4</sub> )
CIRCLING	2640-1 706 (800-1)	2660-1 726 (800-1)	2660-2 726 (800-2)	2800-2 <sup>3</sup> / <sub>4</sub> 866 (900-2 <sup>3</sup> / <sub>4</sub> )

GS 3.00° TCH 40

ST. MARYS, PENNSYLVANIA  
Amdt 1 08101

41°25'N - 78°30'W

# RNAV (GPS) RWY 28

ST. MARYS MUNI (OYM)