

WAAS CH <b>40102</b> <b>W10A</b>	APP CRS <b>101°</b>	Rwy Idg TDZE Apt Elev	<b>4300</b> <b>1909</b> <b>1934</b>
--	------------------------	-----------------------------	---

# RNAV (GPS) RWY 10

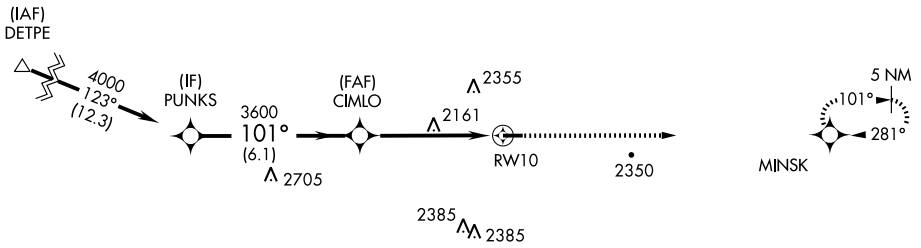
ST. MARYS MUNI (OYM)

**▽** DME/DME RNP-0.3 NA. If local altimeter setting not received, use Bradford altimeter setting and increase DA to 2394 feet and increase all MDAs 240 feet. VDP NA when using Bradford altimeter setting.

**▲** NA MISSED APPROACH: Climb to 4000 direct MINSK and hold.

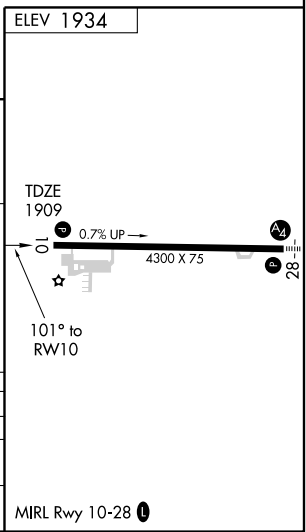
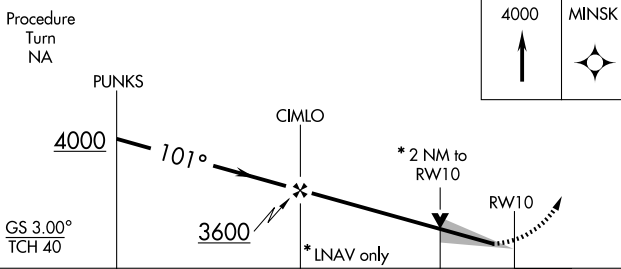
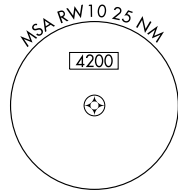
AWOS-3 <b>118.05</b>	CLEVELAND CENTER <b>124.325 353.85</b>	ALTOONA CLNC DEL <b>121.3</b>	UNICOM <b>122.7 (CTAF)</b> <b>0</b>
-------------------------	---	----------------------------------	--

Procedure NA for arrivals at DETPE via V184 NW bnd.



NE-4, 22 OCT 2009 to 19 NOV 2009

NE-4, 22 OCT 2009 to 19 NOV 2009



CATEGORY	A	B	C	D
LPV DA	2169-1		260 (300-1)	
LNAV MDA	2580-1	671 (700-1)	2580-2 671 (700-2)	2580-2¼ 671 (700-2¼)
CIRCLING	2620-1 686 (700-1)	2660-1 726 (800-1)	2660-2 726 (800-2)	2800-2¾ 866 (900-2¾)

MIRL Rwy 10-28 **0**