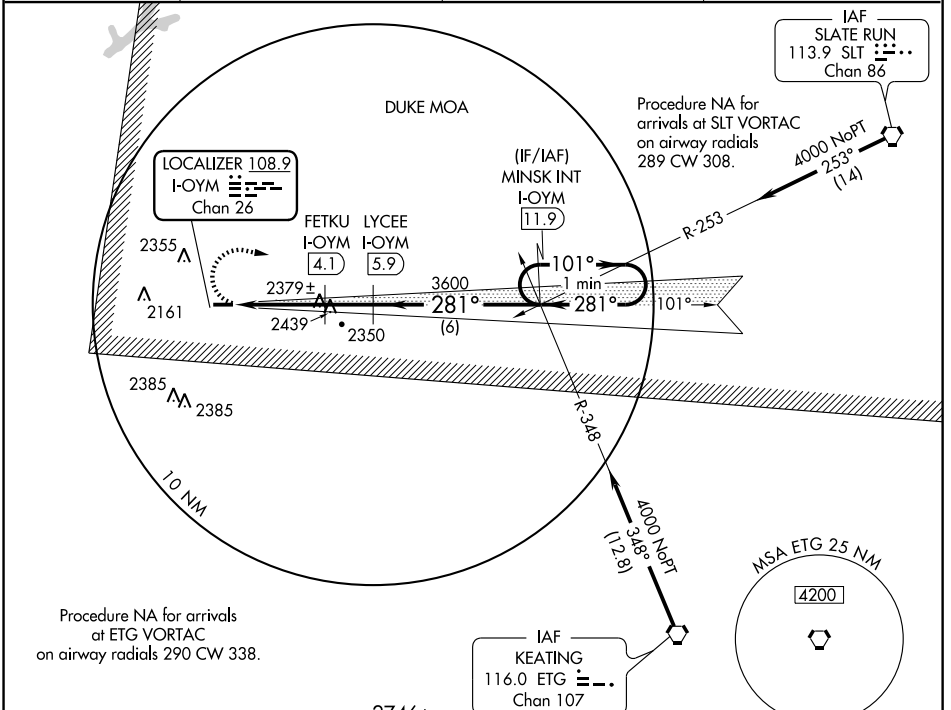


LOC/DME I-OYM <b>108.9</b> Chan 26	APP CRS <b>281°</b>	Rwy Idg TDZE Apt Elev	<b>4300</b> <b>1934</b> <b>1934</b>
--	------------------------	-----------------------------	---

**LOC/DME RWY 28**  
ST. MARYS MUNI (OYM)

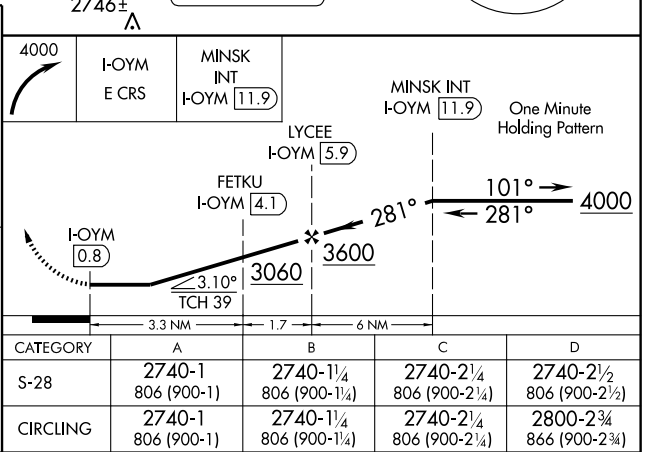
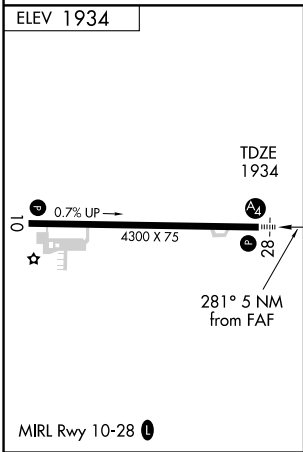
<p>▼ If local altimeter setting not received, use Bradford altimeter setting and increase all MDAs 240 feet. Inoperative table does not apply. Visibility reduction by helicopters NA.</p> <p>▲ NA</p>	<p>MALS</p> <p>☉ -</p>	<p>MISSED APPROACH: Climbing right turn to 4000 via I-OYM east course to MINSK INT/11.9 DME and hold.</p>
--	------------------------	---

AWOS-3 <b>118.05</b>	CLEVELAND CENTER <b>124.325 353.85</b>	ALTOONA CLNC DEL <b>121.3</b>	UNICOM <b>122.7 (CTAF) 0</b>
-------------------------	---	----------------------------------	---------------------------------



NE-4, 22 OCT 2009 to 19 NOV 2009

NE-4, 22 OCT 2009 to 19 NOV 2009



CATEGORY	A	B	C	D
S-28	2740-1 806 (900-1)	2740-1 1/4 806 (900-1 1/4)	2740-2 1/4 806 (900-2 1/4)	2740-2 1/2 806 (900-2 1/2)
CIRCLING	2740-1 806 (900-1)	2740-1 1/4 806 (900-1 1/4)	2740-2 1/4 806 (900-2 1/4)	2800-2 3/4 866 (900-2 3/4)