

BERLIN, NEW JERSEY

AL-5496 (FAA)

VOR-B

BERLIN / CAMDEN COUNTY (19N)

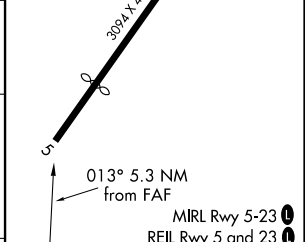
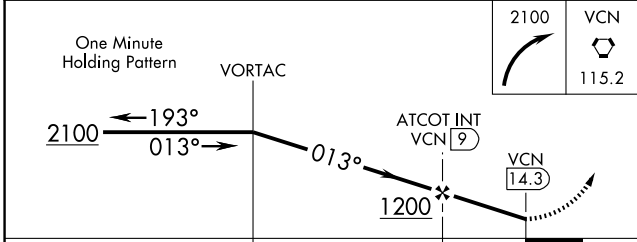
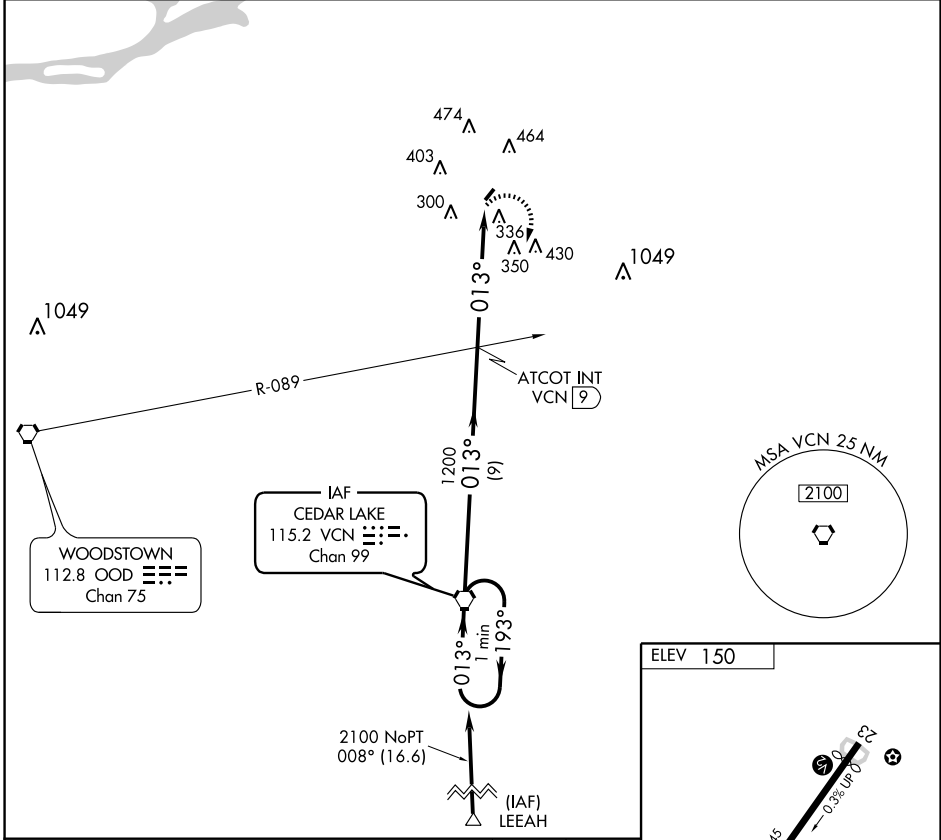
VORTAC VCN 115.2 Chan 99	APP CRS 013°	Rwy Idg TDZE Apt Elev	N/A N/A 150
--	------------------------	-----------------------------	--

▼
▲ NA
Use Philadelphia Intl altimeter setting.

MCGUIRE APP CON
124.15 363.8

MISSED APPROACH: Climbing right turn to 2100 direct VCN VORTAC and hold.

UNICOM
123.0 (CTAF)



CATEGORY	A	B	C	D
CIRCLING	720-1 570 (600-1)		NA	

FAF to MAP 5.3 NM					
Knots	60	90	120	150	180
Min:Sec	5:18	3:32	2:39	2:07	1:46

BERLIN, NEW JERSEY
Amdt 2 09183

39° 47'N - 74° 57'W

BERLIN / CAMDEN COUNTY (19N)

VOR-B

NE-2, 22 OCT 2009 to 19 NOV 2009

NE-2, 22 OCT 2009 to 19 NOV 2009