

BERLIN, NEW JERSEY

AL-5496 (FAA)

RNAV (GPS) RWY 23

BERLIN / CAMDEN COUNTY (19N)

APP CRS	Rwy Idg	2855
230°	TDZE	142
	Apt Elev	150

▼ Inoperative table does not apply. DME/DME RNP-0.3 NA. Visibility reduction by helicopters NA. Use Mount Holly altimeter setting; if not received use Philadelphia Intl altimeter setting and increase all MDAs 20 feet.

▲ NA

MISSED APPROACH: Climbing right turn to 2000 direct HOLEY and hold.

MCGUIRE APP CON
124.15 363.8

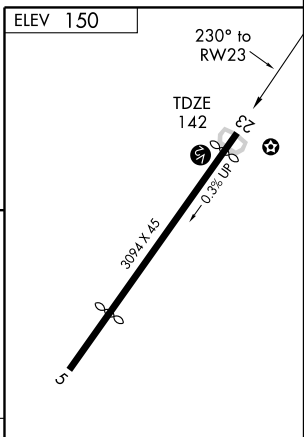
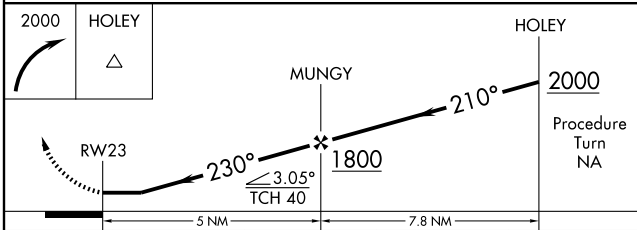
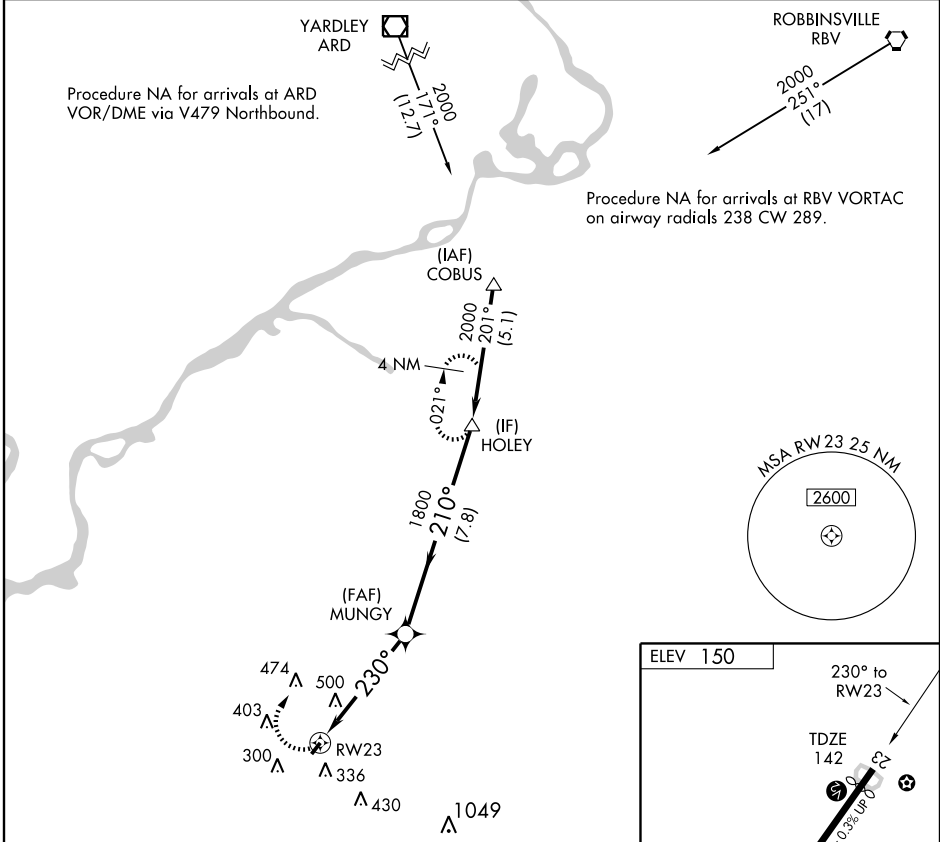
UNICOM
123.0 (CTAF) **1**

Procedure NA for arrivals at ARD VOR/DME via V479 Northbound.

Procedure NA for arrivals at RBV VORTAC on airway radials 238 CW 289.

NE-2, 22 OCT 2009 to 19 NOV 2009

NE-2, 22 OCT 2009 to 19 NOV 2009



CATEGORY	A	B	C	D
LNAV MDA	840-1	698 (700-1)		NA
CIRCLING	860-1	710 (800-1)		NA

REIL Rwy 5 and 23 **1**
MIRL Rwy 5-23 **1**

BERLIN, NEW JERSEY
Orig 09183

39° 47'N - 74° 57'W

RNAV (GPS) RWY 23