

WAAS CH <b>82704</b> <b>W35A</b>	APP CRS <b>348°</b>	Rwy Ldg <b>5210</b> TDZE <b>950</b> Apt Elev <b>951</b>
--	------------------------	---

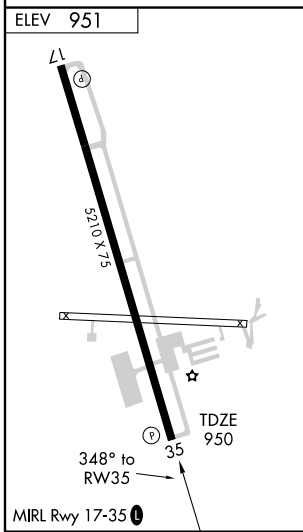
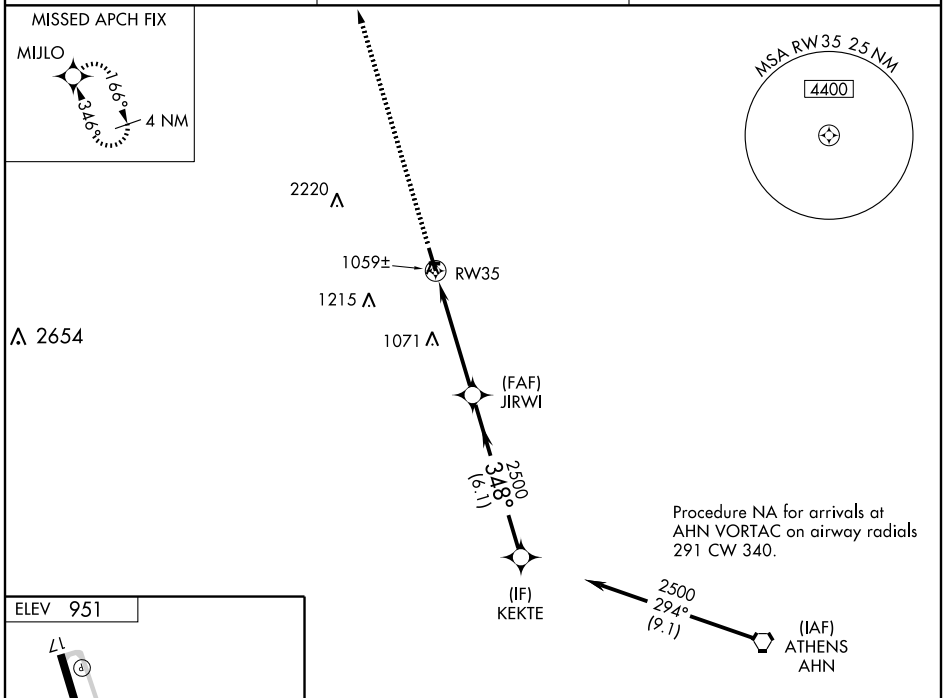
# RNAV (GPS) RWY 35

JEFFERSON/ JACKSON COUNTY (19A)

▼ Baro-VNAV NA when using Athens/Ben Epps altimeter setting. For uncompensated Baro-VNAV systems, LNAV/VNAV NA below -16°C (4°F) or above 46°C (114°F).  
 ▲ DME/DME RNP-0.3 NA. Visibility reduction by helicopters NA. When local altimeter setting not received, use Athens/Ben Epps altimeter setting and increase all DA/MDA 80 feet. Increase LPV and LNAV/VNAV visibility ¼ mile. Increase LNAV Cat D visibility ¼ mile.

MISSED APPROACH: Climb to 3500 direct MIJLO and hold.

ASOS <b>118.125</b>	ATLANTA APP CON * <b>132.475 291.1</b>	UNICOM <b>122.8 (CTAF) 0</b>
------------------------	---	---------------------------------



3500	MIJLO	JIRWI 2500	KEKTE	Procedure Turn NA
↑	✧	✖	✖	
	RW35	2500	2500	GS 3.00° TCH 50
	4.7 NM	6.1 NM		
CATEGORY	A	B	C	D
LPV DA	1233-1 283 (300-1)			
LNAV/VNAV DA	1329-1¼ 379 (400-1¼)			
LNAV MDA	1380-1	430 (500-1)	1380-1¼ 430 (500-1¼)	1380-1½ 430 (500-1½)
CIRCLING	1380-1 429 (500-1)	1420-1 469 (500-1)	1420-1½ 469 (500-1½)	1520-2 569 (600-2)

SE-4, 22 OCT 2009 to 19 NOV 2009

SE-4, 22 OCT 2009 to 19 NOV 2009