

WAAS CH 78404 W17A	APP CRS 168°	Rwy ldg 5210 TDZE 943 Apt Elev 951
----------------------------------------	------------------------	---------------------------------------------------------------

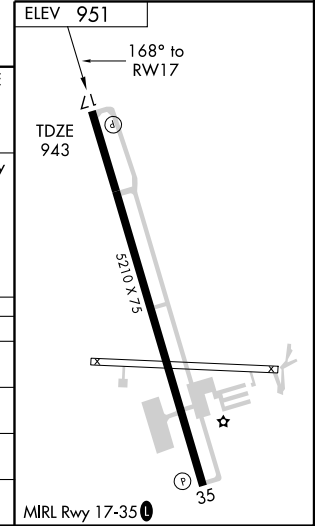
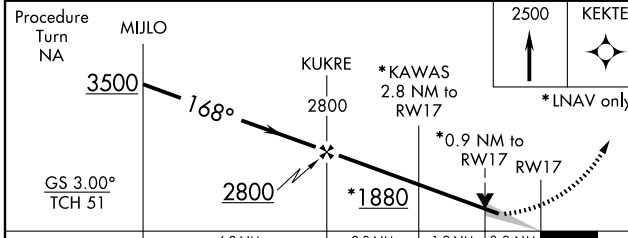
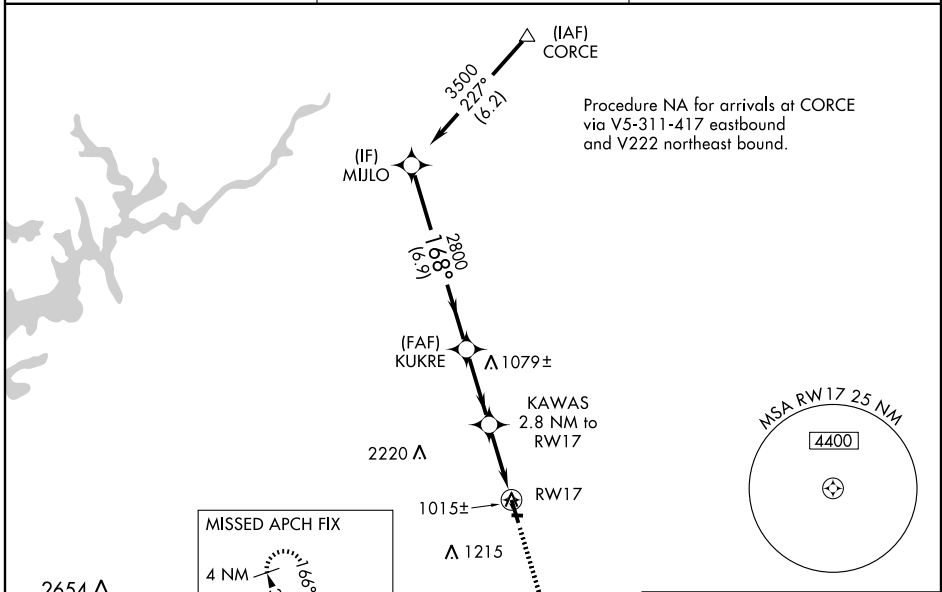
RNAV (GPS) RWY 17

JEFFERSON/ JACKSON COUNTY (19A)

▼ Baro-VNAV NA when using Athens/Ben Epps altimeter setting. For uncompensated Baro-VNAV systems, LNAV/VNAV NA below -16°C (4°F) or above 47°C (116°F). DME/DME RNP-0.3 NA. VDP NA when using Athens/Ben Epps altimeter setting. When local altimeter setting not received, use Athens/Ben Epps altimeter setting and increase all DA/MDA 80 feet. Increase LPV and LNAV/VNAV visibility ¼ mile. Increase LNAV Cat C/D visibility ¼ mile.

MISSED APPROACH: Climb to 2500 direct KEKTE and hold.

ASOS 118.125	ATLANTA APP CON * 132.475 291.1	UNICOM 122.8 (CTAF) 0
------------------------	-------------------------------------------	---------------------------------



CATEGORY	A	B	C	D
LPV DA		1193-1	250 (300-1)	
LNAV/ VNAV DA		1228-1	285 (300-1)	
LNAV MDA		1280-1	337 (400-1)	
CIRCLING	1360-1 409 (500-1)	1420-1 469 (500-1)	1420-1½ 469 (500-1½)	1520-2 569 (600-2)

SE-4, 22 OCT 2009 to 19 NOV 2009

SE-4, 22 OCT 2009 to 19 NOV 2009