

RNAV (GPS) RWY 34R

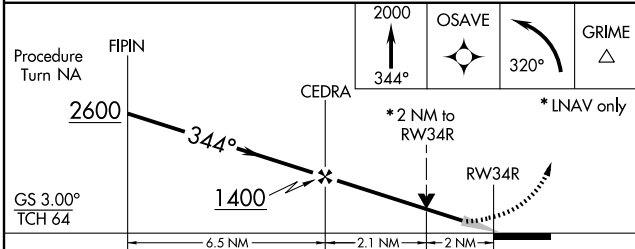
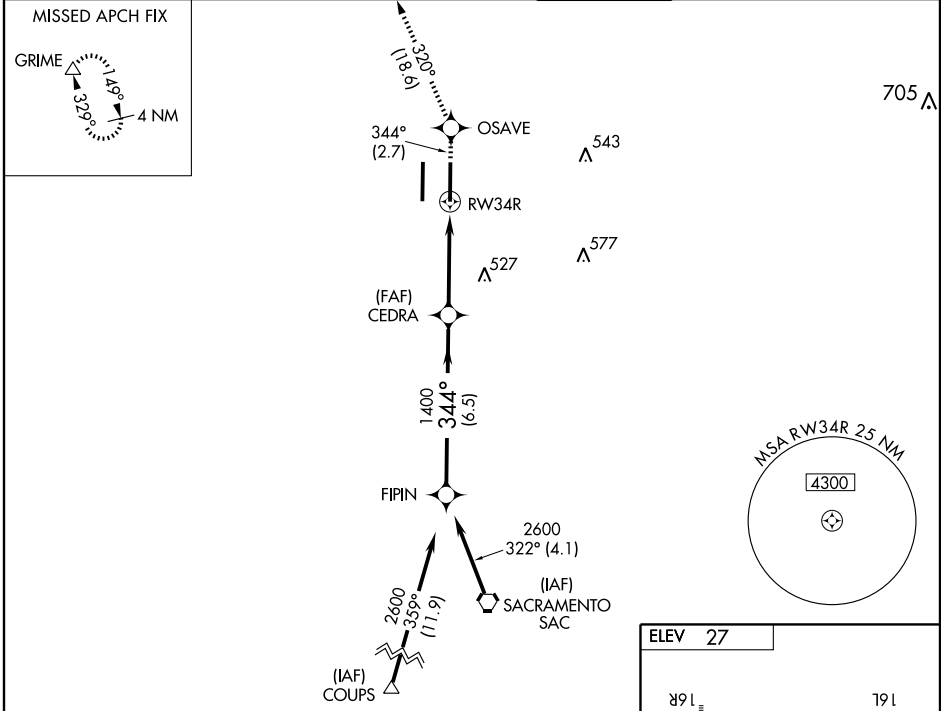
SACRAMENTO INTL (SMF)

APP CRS 344°	Rwy Idg 8601
	TDZE 24
	Apt Elev 27

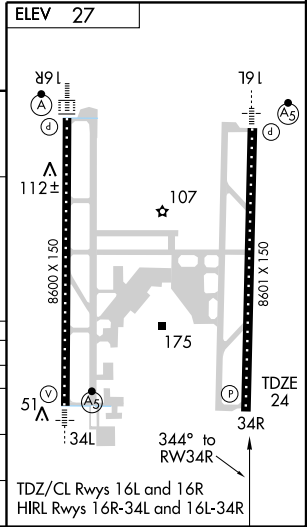
⚠ For uncompensated Baro/VNAV systems, Baro-VNAV NA below -15°C (5°F) or above 48°C (118°F).
⚠ Circling not authorized west of Rwy 16L-34R.
 DME/DME RNP-0.3 NA.

MISSED APPROACH: Climb to 2000 via 344° course to OSAVE WP, then left turn via 320° track to GRIME WP and hold.

ATIS 126.75	NORCAL APP CON (W-N) 134.8 270.25 (S-SW) 125.25 257.9	(NE) 125.4 259.1 (E-SE) 127.4 317.5	CAPITAL TOWER 125.7 256.7	GND CON 121.7	CLNC DEL 121.1 256.7
-----------------------	---	--	-------------------------------------	-------------------------	--------------------------------



CATEGORY	A	B	C	D
GLS PA DA	NA			
LNAV/VNAV DA	376-1¼		352 (400-1¼)	
LNAV MDA	720-1 696 (700-1)	720-2 696 (700-2)	720-2¼ 696 (700-2¼)	720-2¼ 693 (700-2¼)
CIRCLING	720-1 693 (700-1)	720-2 693 (700-2)	720-2¼ 693 (700-2¼)	720-2¼ 693 (700-2¼)



SW-2, 22 OCT 2009 to 19 NOV 2009

SW-2, 22 OCT 2009 to 19 NOV 2009