


RNAV (GPS) RWY 34L

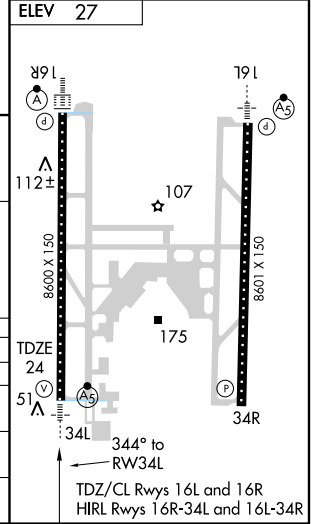
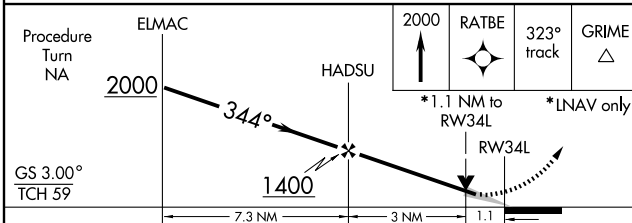
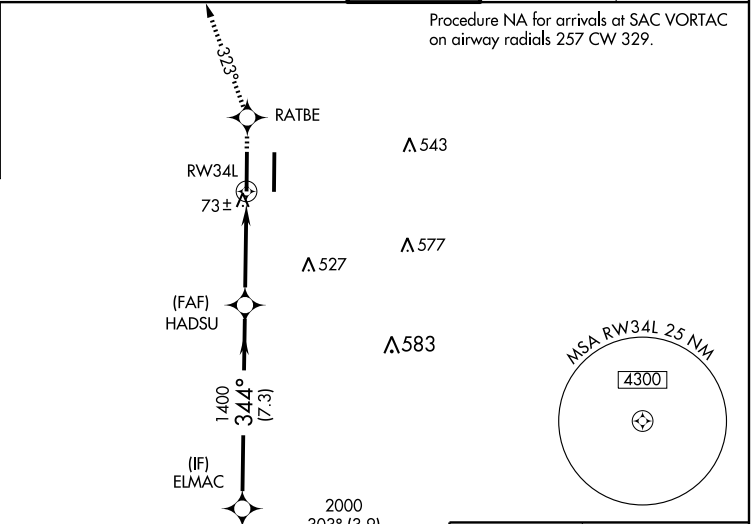
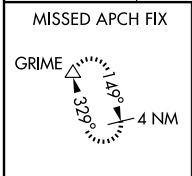
SACRAMENTO INTL (SMF)

WAAS CH 86602 W34A	APP CRS 344°	Rwy Idg 8600 TDZE 24 Apt Elev 27
--	------------------------	--

▼ DME/DME RNP-0.3 NA. Circling NA east of Rwy 16R-34L.
▲ For inoperative MALSR, increase LNAV/VNAV Cat. D visibility to RVR 5000 and LNAV Cat. D visibility to RVR 6000.
 For inoperative MALSR, increase LPV all Cats. visibility to RVR 4000.
 Baro-VNAV NA when using Sacramento Executive altimeter setting.
 If local altimeter setting not received, use Sacramento Executive altimeter setting and increase all DAs/MDAs 40 feet.
 For uncompensated Baro-VNAV systems, LNAV/VNAV NA below -15°C (5°F) or above 48°C (119°F).
 VDP NA with Sacramento Executive altimeter setting.

MALSR

 MISSED APPROACH: Climb to 2000 direct RATBE and via 323° track to GRIME and hold.

ATIS 126.75	NORCAL APP CON (W-N) 134.8 270.25 (S-SW) 125.25 257.9	(NE) 125.4 259.1 (E-SE) 127.4 317.5	CAPITAL TOWER 125.7 256.7	GND CON 121.7	CLNC DEL 121.1 256.7
-----------------------	---	--	-------------------------------------	-------------------------	--------------------------------



CATEGORY	A	B	C	D
LPV DA	274/24		250 (300-½)	
LNAV/VNAV DA	336/24	312 (400-½)		336/40 312 (400-¾)
LNAV MDA	420/24	396 (400-½)		420/50 396 (400-1)
CIRCLING	440-1 413 (500-1)	480-1 453 (500-1)	480-1½ 453 (500-1½)	580-2 553 (600-2)

SW-2, 22 OCT 2009 to 19 NOV 2009

SW-2, 22 OCT 2009 to 19 NOV 2009