


RNAV (GPS) RWY 16R

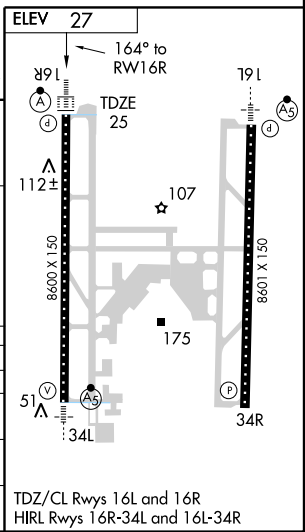
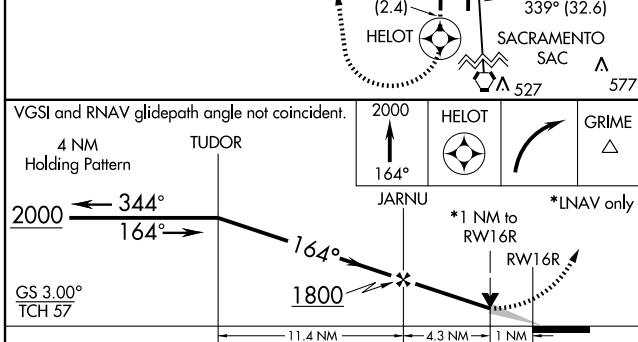
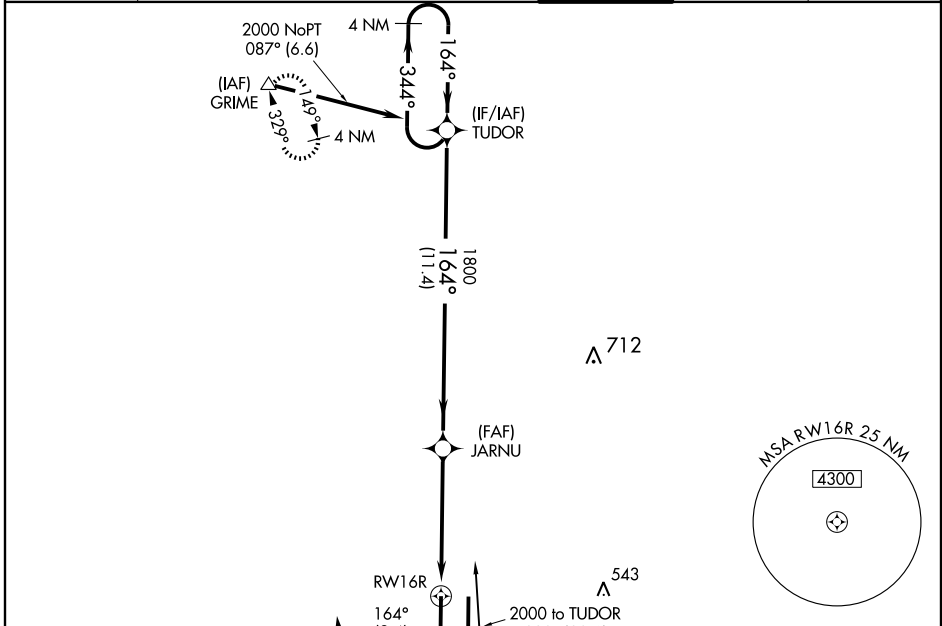
SACRAMENTO INTL (SMF)

APP CRS 164°	Rwy Idg 8600
	TDZE 25
	Apt Elev 27

⚠ Circling NA east of Rwy 16R-34L. DME/DME RNP-0.3 NA.
 For uncompensated Baro-VNAV systems, LNAV/VNAV NA below -15°C (5°F) or above 49°C (120°F).
⚠ For inoperative ALSF-2 increase LNAV Cat D visibility to RVR 6000.

ALSF-2 
 MISSED APPROACH: Climb to 2000 via 164° course to HELOT WP, then right turn direct GRIME WP and hold.

ATIS 126.75	NORCAL APP CON (W-N) 134.8 270.25 (NE) 125.4 259.1 (S-SW) 125.25 257.9 (E-SE) 127.4 317.5	CAPITAL TOWER 125.7 256.7	GND CON 121.7	CLNC DEL 121.1 256.7
-----------------------	---	-------------------------------------	-------------------------	--------------------------------



CATEGORY	A	B		C	D
GLS PA DA		NA			
LNAV/VNAV DA		409/40	384 (400-34)		
LNAV MDA		400/24	375 (400-½)		400/50 375 (400-1)
CIRCLING	440-1 413 (500-1)	480-1 453 (500-1)	480-1½ 453 (500-1½)	580-2 553 (600-2)	

TDZ/CL Rwy 16L and 16R
 HIRL Rwy 16R-34L and 16L-34R

SW-2, 22 OCT 2009 to 19 NOV 2009

SW-2, 22 OCT 2009 to 19 NOV 2009