

# RNAV (GPS) RWY 16L

SACRAMENTO INTL (SMF)

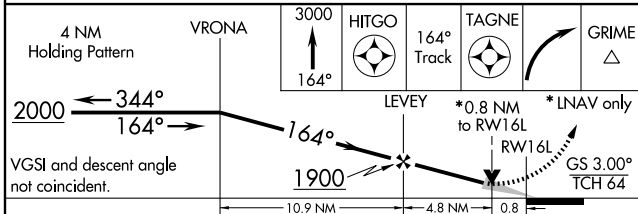
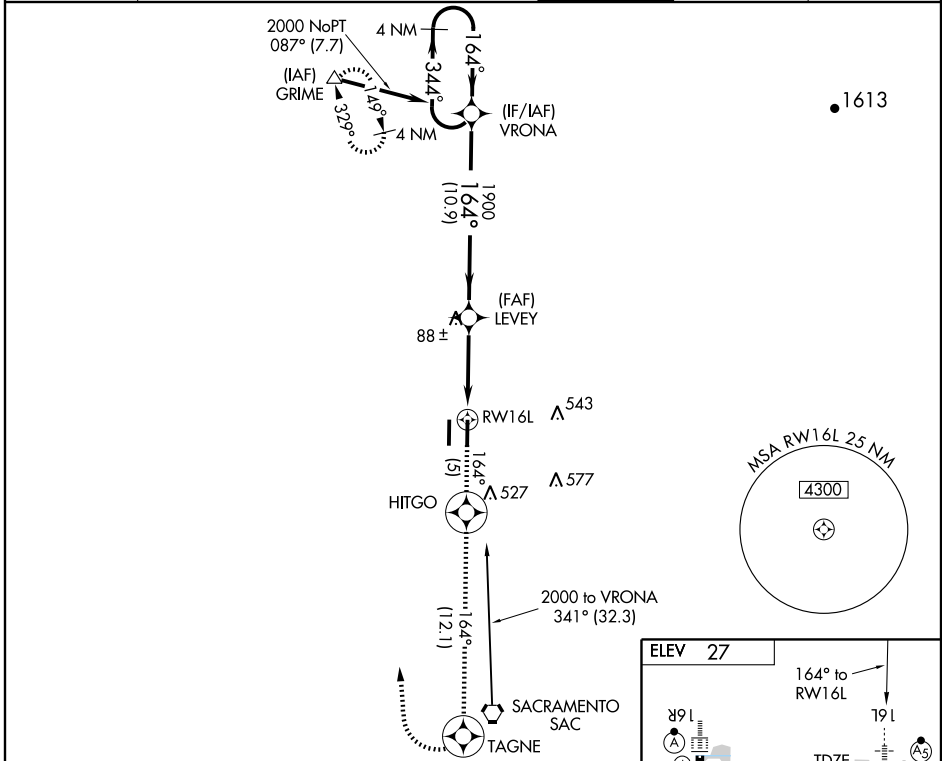
APP CRS <b>164°</b>	Rwy Idg <b>8601</b>
	TDZE <b>27</b>
	Apt Elev <b>27</b>

▼ DME/DME RNP-0.3 NA. Inoperative table does not apply to LNAV Cat. D.  
 ▲ For inoperative MALS, increase LNAV Cat D visibility to 1 1/4 mile.  
 ▲ For uncompensated Baro-VNAV systems, LNAV/VNAV NA below -15°C (5°F) or above 49°C (120°F). Circling NA west of Rwy 16L-34R.

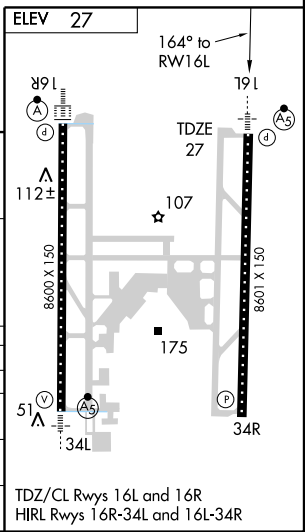
MALS R (AS)

MISSED APPROACH: Climb to 3000 via 164° course to HITGO WP, then via track 164° to TAGNE WP, then right turn direct GRIME WP and hold.

ATIS <b>126.75</b>	NORCAL APP CON (W-N) <b>134.8 270.25</b> (S-SW) <b>125.25 257.9</b>	(NE) <b>125.4 259.1</b> (E-SE) <b>127.4 317.5</b>	CAPITAL TOWER <b>125.7 256.7</b>	GND CON <b>121.7</b>	CLNC DEL <b>121.1 256.7</b>
-----------------------	---	--	-------------------------------------	-------------------------	--------------------------------



CATEGORY	A	B	C	D
GLS PA DA	NA			
LNAV/VNAV DA	418-3/4 391 (400-3/4)			
LNAV MDA	380-1/2 353 (400-1/2)		380-1 353 (400-1)	
CIRCLING	440-1 413 (500-1)	480-1 453 (500-1)	480-1 1/2 453 (500-1 1/2)	580-2 553 (600-2)



SW-2, 22 OCT 2009 to 19 NOV 2009

SW-2, 22 OCT 2009 to 19 NOV 2009