

ILS or LOC RWY 34L

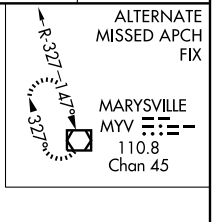
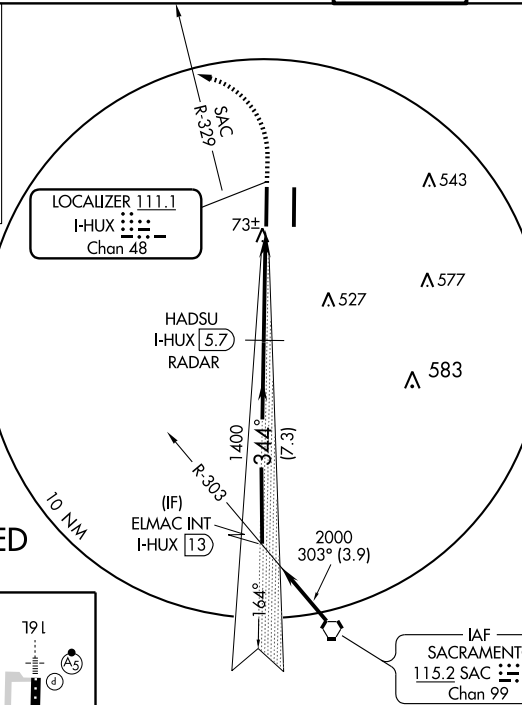
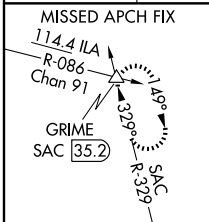
SACRAMENTO INTL (SMF)

LOC/DME I-HUX 111.1 Chan 48	APP CRS 344°	Rwy Idg 8600 TDZE 24 Apt Elev 27
-------------------------------------------------	------------------------	-------------------------------------------------------------

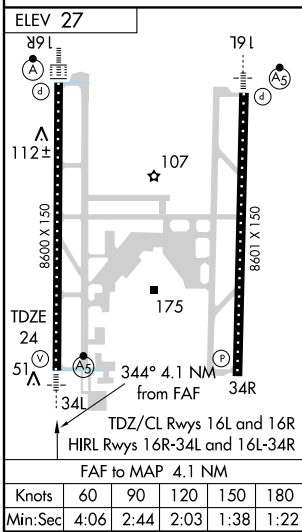
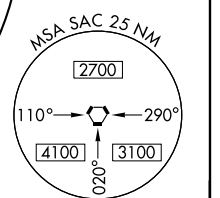
VDP NA with Sacramento Executive altimeter setting.
▲ For inoperative MALS/R increase S-LOC 34L Cat. D visibility to RVR 5000.
 Circling NA east of Rwy 16R/34L.
 If local altimeter setting not received, use Sacramento Executive altimeter setting and increase all DA/MDAs 40 feet.
 * RVR 1800 authorized with the use of FD or AP or HUD to DA.

MALS/R MISSED APPROACH: Climb to 500, then climbing left turn to 2000 via heading 320° and SAC R-329 to GRIME INT/SAC 35.2 DME and hold.

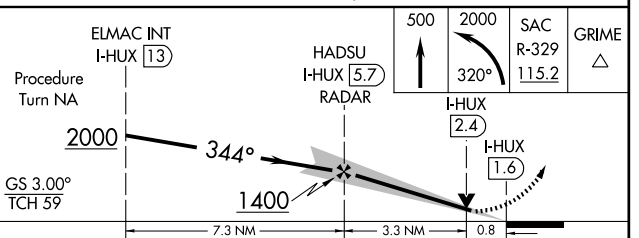
ATIS 126.75	NORCAL APP CON (W-N) 134.8 270.25 (S-SW) 125.25 257.9	(NE) 125.4 259.1 (E-SE) 127.4 317.5	CAPITAL TOWER 125.7 256.7	GND CON 121.7	CLNC DEL 121.1 256.7
-----------------------	---------------------------------------------------------------------------	------------------------------------------------------	-------------------------------------	-------------------------	--------------------------------



RADAR or DME REQUIRED



Procedure NA for arrivals on SAC VORTAC airway radials 257 CW 329.



CATEGORY	A	B	C	D
S-ILS 34L	* 224/24 200 (200-½)			
S-LOC 34L	340/24 316 (400-½)			340/40 316 (400-¾)
CIRCLING	440-1 413 (500-1)	480-1 453 (500-1)	480-1½ 453 (500-1½)	580-2 553 (600-2)

SW-2, 22 OCT 2009 to 19 NOV 2009

SW-2, 22 OCT 2009 to 19 NOV 2009