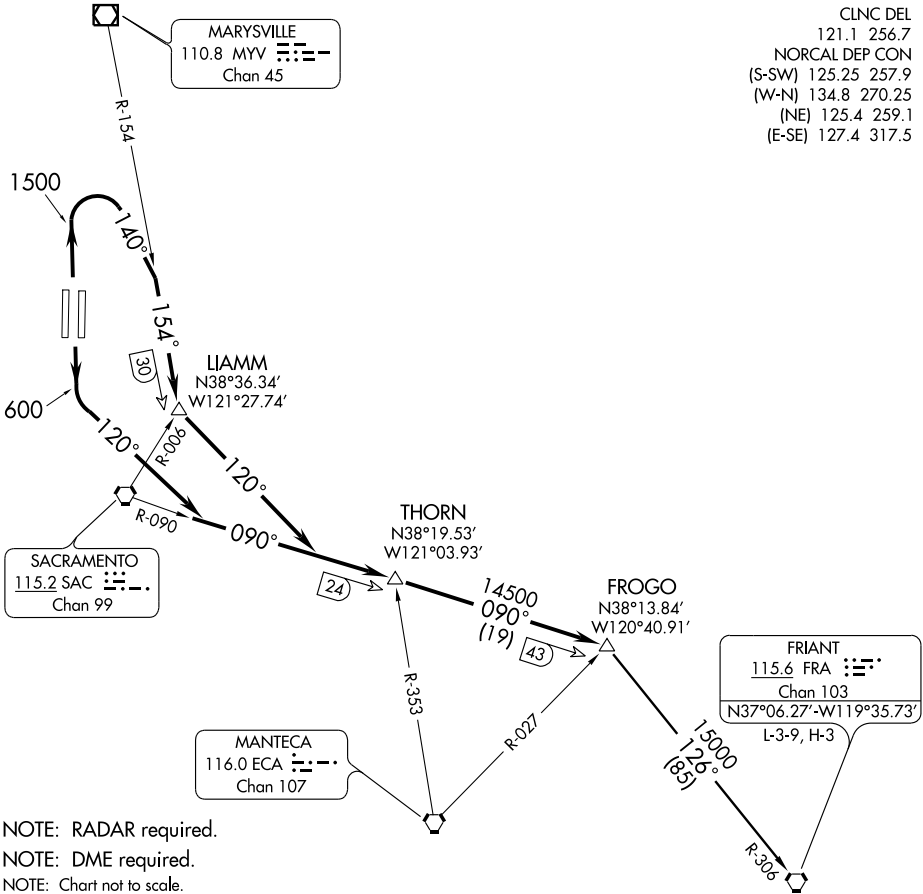


FROGO SIX DEPARTURE

SL-5490 (FAA)

SACRAMENTO INTL (SMF)
SACRAMENTO, CALIFORNIA

CLNC DEL	121.1	256.7
NORCAL DEP CON		
(S-SW)	125.25	257.9
(W-N)	134.8	270.25
(NE)	125.4	259.1
(E-SE)	127.4	317.5



SW-2, 22 OCT 2009 to 19 NOV 2009

SW-2, 22 OCT 2009 to 19 NOV 2009

NOTE: RADAR required.
 NOTE: DME required.
 NOTE: Chart not to scale.

DEPARTURE ROUTE DESCRIPTION

TAKE-OFF RUNWAYS 16L/R: Maintain runway heading until 600', then turn left heading 120° to intercept and proceed via the SAC R-090 to FROGO INT. Then via (transition) or (assigned route). Expect further clearance to filed altitude after THORN INT.

TAKE-OFF RUNWAYS 34L/R: Maintain runway heading until 1500', then turn right heading 140° to intercept the MYV R-154. Intercept and proceed via the MYV R-154 to LIAMM INT, then turn left heading 120° to intercept and proceed via the SAC R-090 to FROGO INT. Then via (transition) or (assigned route). Expect further clearance to filed altitude after LIAMM INT.

LOST COMMUNICATIONS: Take-off Runways 34L/R: Maintain runway heading until 1500' then turn right heading 140° to intercept the MYV R-154. Intercept and proceed via the MYV R-154 to intercept the SAC R-090 to FROGO INT. Then resume own navigation.

FRIANT TRANSITION (FROGO6.FRA): From over FROGO INT via FRA R-306 to FRA VORTAC.