

# FLUNK THREE ARRIVAL

ST-5490 (FAA)

SACRAMENTO INTL  
SACRAMENTO, CALIFORNIA

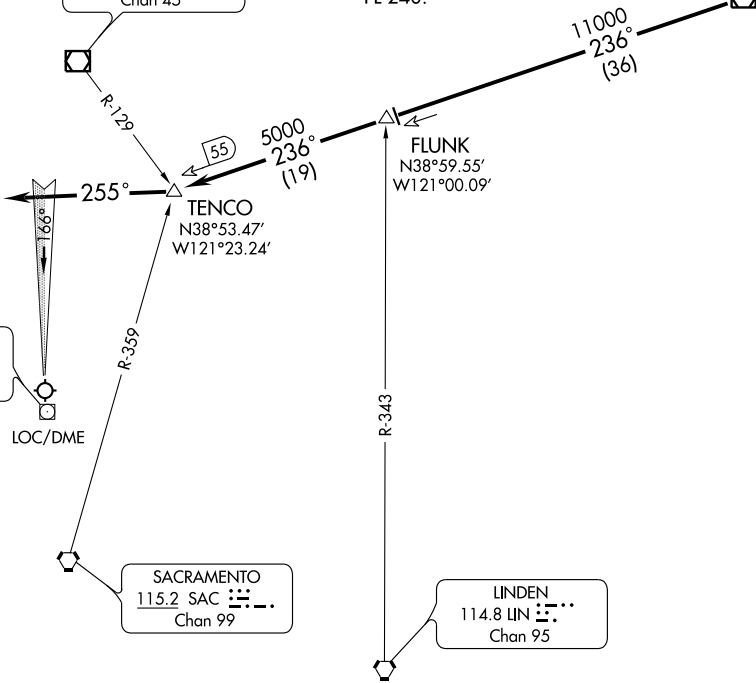
NORCAL APP CON  
120.45 353.7

SQUAW VALLEY
113.2 SWR
Chan 79
N39°10.82'-W120°16.18'

### TURBOJET VERTICAL NAVIGATION PLANNING INFORMATION

Expect clearance to cross at or below  
FL 240.

MARYSVILLE
110.8 (T) MYV
Chan 45



SW-2, 22 OCT 2009 to 19 NOV 2009

SW-2, 22 OCT 2009 to 19 NOV 2009

NOTE: Chart not to scale.

From over SWR VOR/DME via SWR R-236 to TENCO INT. Depart TENCO INT heading 255° for vector to final approach course. Expect descent below 10000' passing FLUNK INT.

# FLUNK THREE ARRIVAL