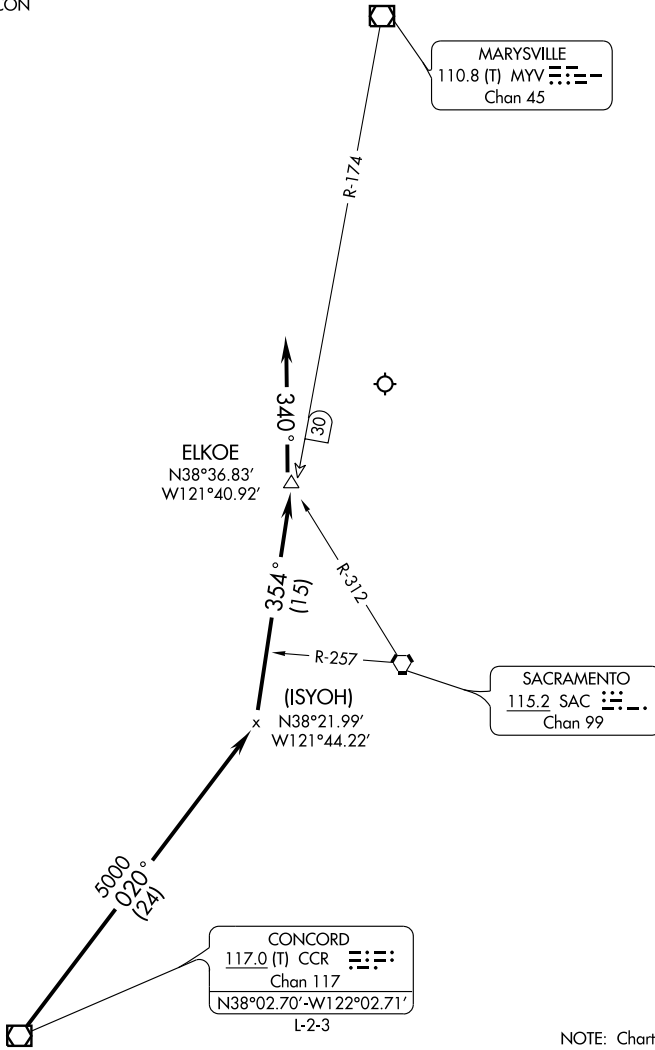


# CONCORD ONE ARRIVAL

ST-5490 (FAA)

SACRAMENTO INTL  
SACRAMENTO, CALIFORNIA

NORCAL APP CON  
125.25 257.9



SW-2, 22 OCT 2009 to 19 NOV 2009

SW-2, 22 OCT 2009 to 19 NOV 2009

NOTE: Chart not to scale.

From over CCR VOR/DME via CCR R-020 and the MYV R-174 to ELKOE INT then via heading 340° for radar vector to final approach course. Expect descent below 10,000 after passing the SAC R-257.

# CONCORD ONE ARRIVAL