

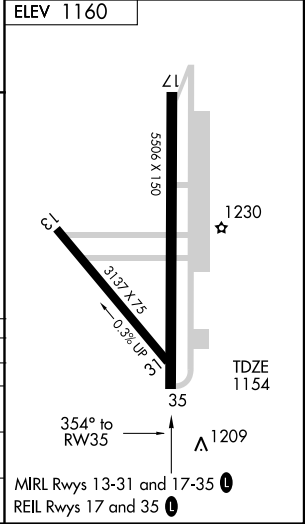
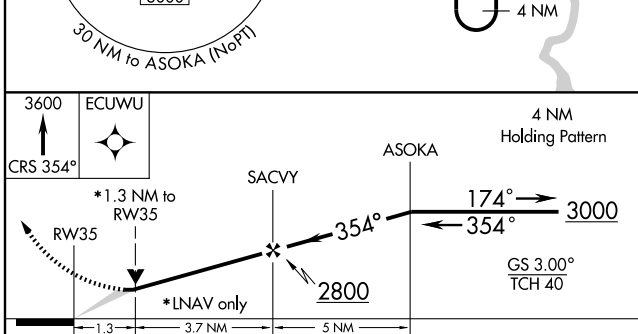
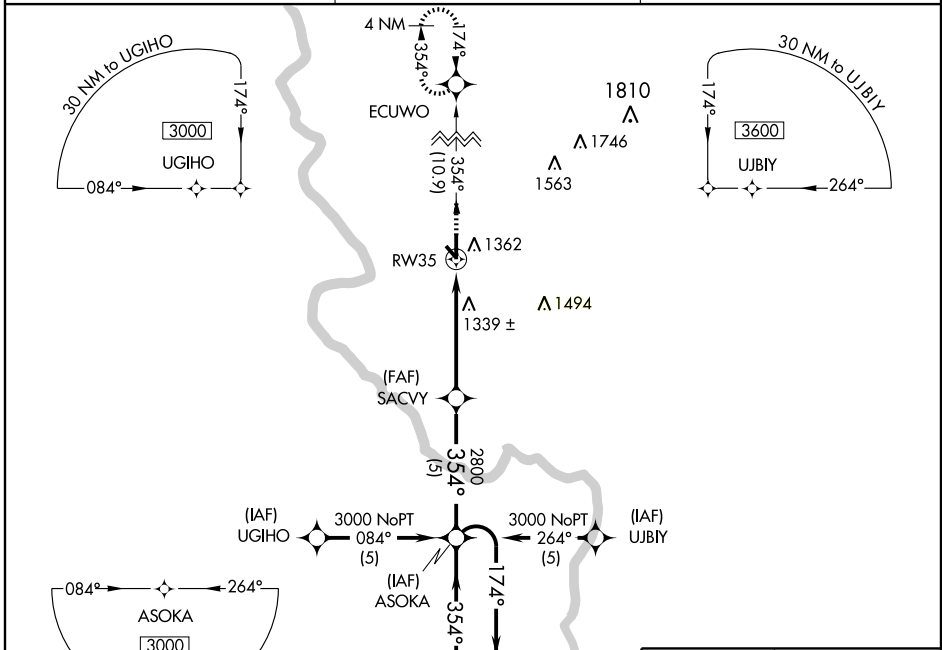
# RNAV (GPS) RWY 35

WINFIELD/ARKANSAS CITY/ STROTHER FIELD (WLD)

APP CRS <b>354°</b>	Rwy Idg <b>5506</b>
	TDZE <b>1154</b>
	Apt Elev <b>1160</b>

<b>▲ NA</b>	GPS or RNP-0.3 REQUIRED. DME/DME RNP-0.3 NA. Baro-NAV NA below -17°C (2°F).	MISSED APPROACH: Climb to 3600 via 354° course to ECUWO WP and hold.
-------------	---	--

ASOS <b>118.025</b>	KANSAS CITY CENTER <b>127.8 319.1</b>	UNICOM <b>122.8 (CTAF) 0</b>
------------------------	--	---------------------------------



CATEGORY	A	B	C	D
GLS PA DA	NA			
LNAV/VNAV DA	1540-1½ 386 (400-1½)		NA	
LNAV MDA	1600-1 446 (500-1)		1600-1½ 446 (500-1½) NA	
CIRCLING	1680-1½ 520 (600-1½)		NA	

NC-2, 22 OCT 2009 to 19 NOV 2009

NC-2, 22 OCT 2009 to 19 NOV 2009