

RNAV (GPS) RWY 36R

HUNTSVILLE INTL-CARL T. JONES FIELD (HSV)

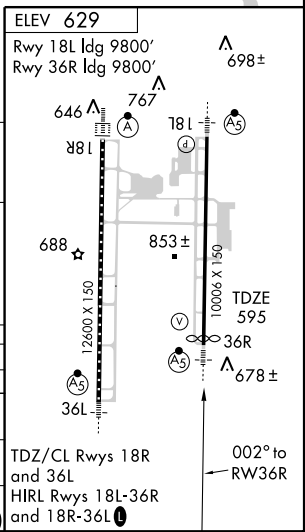
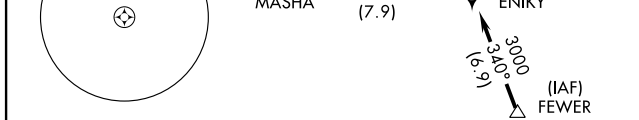
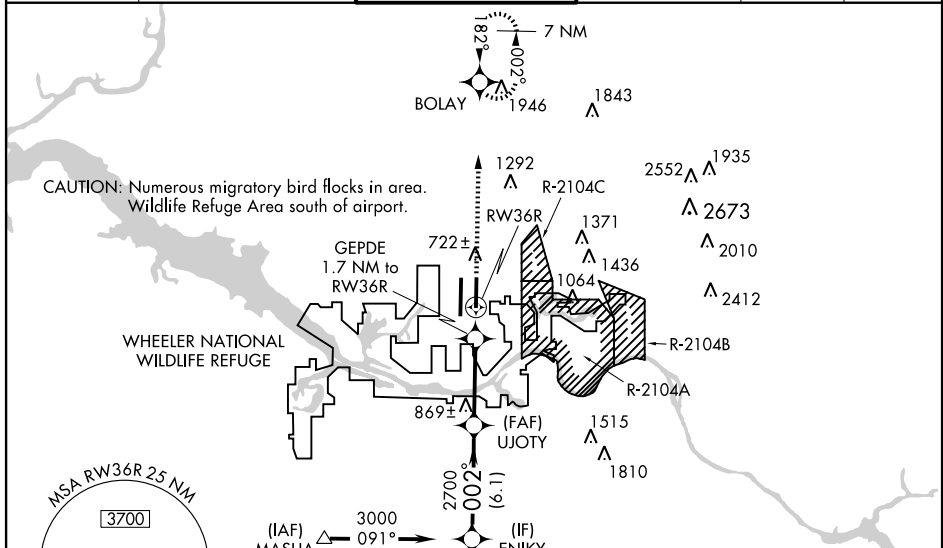
WAAS CH 86606 W36B	APP CRS 002°	Rwy Idg TDZE Apt Elev	9800 595 629
--	------------------------	-----------------------------	---

For inoperative MALS when using Decatur altimeter setting, increase LPV Cat. E visibility to RVR 4000, LNAV/VNAV Cat. E visibility to RVR 6000, and LNAV Cat. E visibility to 1½ mile. For inoperative MALS, increase LPV Cat. E visibility to RVR 4000, LNAV/VNAV Cat. E visibility to RVR 6000 and LNAV Cat. E visibility to 1½ mile.
⚠ Baro-VNAV NA when using Decatur altimeter setting. Circling NA for Cat. E east of ASR Rwy 18L-36R. For uncompensated Baro-VNAV systems, LNAV/VNAV NA below -16°C (4°F) or above 48°C (118°F). DME/DME RNP-0.3 NA. When local altimeter setting not received, use Decatur altimeter setting and increase LPV DA to 821, LNAV/VNAV DA to 958 and MDA 40 feet, and LNAV Cat. E visibility to RVR 6000.

MALS

MISSED APPROACH:
Climb to 3000 direct BOLAY and hold.

ATIS 121.25	HUNTSVILLE APP CON * 125.6 354.1	HUNTSVILLE TOWER * 127.6 (CTAF) 350.35	GND CON 121.9 269.525	CLNC DEL 120.35	UNICOM 122.95
-----------------------	--	---	---------------------------------	---------------------------	-------------------------



CATEGORY	A	B	C	D	E
LPV DA	796/24 201 (200-½)				
LNAV/VNAV DA	933/40 338 (400-¾)				
LNAV MDA	1040/24 445 (500-½)	1040/40 445 (500-¾)	1040/50 445 (500-1)		
CIRCLING	1160-1 531 (600-1)	1160-1½ 531 (600-1½)	1240-2 611 (700-2)	1240-2¼ 611 (700-2¼)	

SE-4, 22 OCT 2009 to 19 NOV 2009

SE-4, 22 OCT 2009 to 19 NOV 2009