


RNAV (GPS) RWY 36L

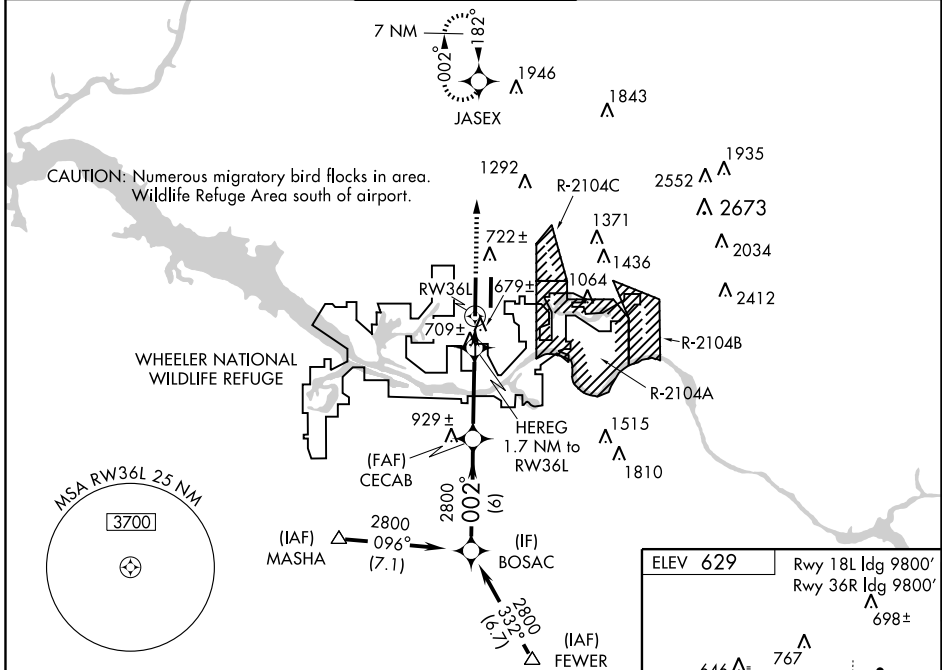
HUNTSVILLE INTL-CARL T. JONES FIELD (HSV)

WAAS CH 82606 W36A	APP CRS 002°	Rwy Idg 12600 TDZE 615 Apt Elev 629
--	------------------------	--

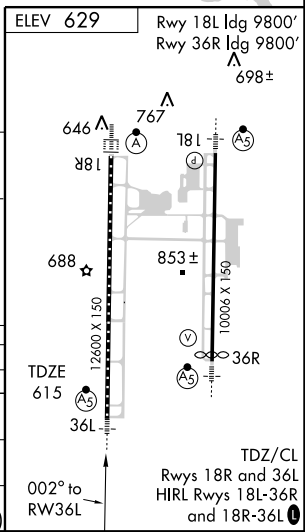
MALSRS

MISSED APPROACH:
 Climb to 3000 direct JASEX and hold.

For inoperative MALSRS, increase LNAV Cat. D and E visibility to RVR 6000, LPV Cat. E visibility to RVR 4000, and LNAV/VNAV Cat. E visibility to RVR 6000. Baro-VNAV NA when using Decatur altimeter setting. Circling NA for Cat. E east of Rwy 18L-36R.
 ⚠ For uncompensated Baro-VNAV systems, LNAV/VNAV NA below -16°C (4°F) or above ASR 48°C (118°F). DME/DME RNP-0.3 NA. When local altimeter setting not received, use Decatur altimeter setting and increase LPV DA to 840, LNAV/VNAV DA to 994 and all MDA 40 feet. VDP NA when using Decatur altimeter setting.

ATIS 121.25	HUNTSVILLE APP CON * 125.6 354.1	HUNTSVILLE TOWER * 127.6 (CTAF) 350.35	GND CON 121.9 269.525	CLNC DEL 120.35	UNICOM 122.95
-----------------------	--	--	---------------------------------	---------------------------	-------------------------



	BOSAC	CECAB	HEREG 1.7 NM to RW36L	JASEX 3000 *LNAV only.	RW36L
	2800	2800	*1200	*0.9 NM to RW36L	
	GS 3.00° TCH 53				
	6 NM	4.9 NM	0.8	0.9	
CATEGORY	A	B	C	D	E
LPV DA	815/24		200 (200-½)		
LNAV/ VNAV DA	969/40		354 (400-¾)		
LNAV MDA	960/24		345 (400-½)		960/50
			345 (400-1)		
CIRCLING	1160-1	531 (600-1)	1160-1½ 531 (600-1½)	1240-2 611 (700-2)	1240-2¼ 611 (700-2¼)



SE-4, 22 OCT 2009 to 19 NOV 2009

SE-4, 22 OCT 2009 to 19 NOV 2009