

# RNAV (GPS) RWY 18R

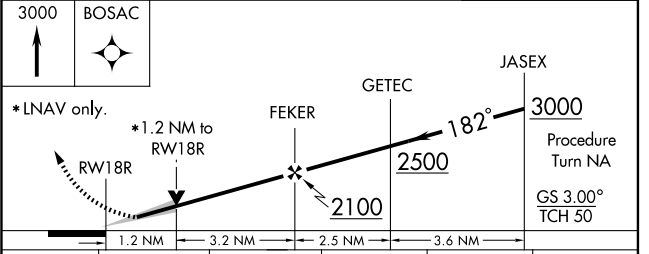
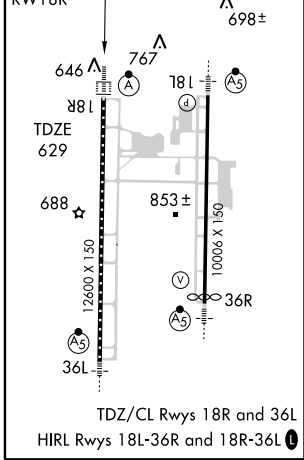
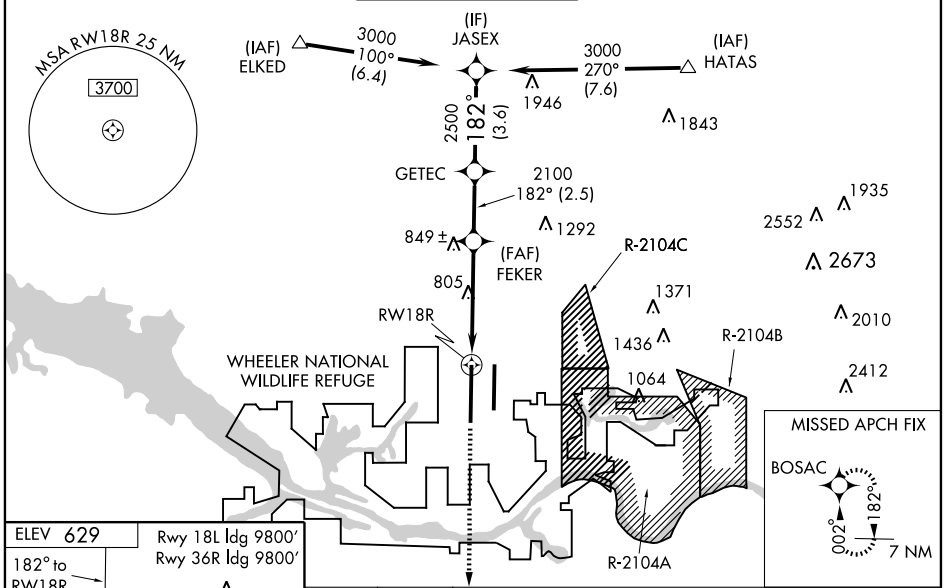
HUNTSVILLE INTL-CARL T. JONES FIELD (HSV)

WAAS CH <b>58206</b> <b>W18B</b>	APP CRS <b>182°</b>	Rwy ldg <b>12600</b> TDZE <b>629</b> Apt Elev <b>629</b>
--	------------------------	--

For inoperative ALSF-2, increase LPV Cat. E visibility to RVR 4000, LNAV/VNAV Cat. E visibility to RVR 6000 and LNAV Cat. E visibility to 1/2, when using Decatur altimeter setting, increase LNAV/VNAV Cat. E visibility to 1/2 and LNAV Cat. E visibility to 3/4. Baro-VNAV NA when using Decatur altimeter setting. Circling NA for Cat. E east of Rwy 18L-36R. DME/DME RNP-0.3 NA. For uncompensated Baro-VNAV systems, LNAV/VNAV NA below -16°C (4°F) or above 47°C (116°F). When local altimeter setting not received, use Decatur altimeter setting and increase visibility to RVR 5000 and LNAV Cat. E visibility to RVR 6000. VDP NA when using Decatur altimeter setting.

ALSF-2  
MISSED APPROACH: Climb to 3000 direct BOSAC WP and hold.

ATIS <b>121.25</b>	HUNTSVILLE APP CON * <b>125.6 354.1</b>	HUNTSVILLE TOWER * <b>127.6 (CTAF) 0 350.35</b>	GND CON <b>121.9 269.525</b>	CLNC DEL <b>120.35</b>	UNICOM <b>122.95</b>
-----------------------	--	--	---------------------------------	---------------------------	-------------------------



CATEGORY	A	B	C	D	E
LPV DA	829/24 200 (200-1/2)				
LNAV/VNAV DA	1017/40 388 (400-3/4)				
LNAV MDA	1060/24	431 (500-1/2)	1060/40 431 (500-3/4)	1060/50	431 (500-1)
CIRCLING	1160-1	531 (600-1)	1160-1 1/2 531 (600-1 1/2)	1240-2	1240-2 1/4 611 (700-2 1/4)

SE-4, 22 OCT 2009 to 19 NOV 2009

SE-4, 22 OCT 2009 to 19 NOV 2009