

HOWELL, MICHIGAN

AL-5485 (FAA)

RNAV (GPS) RWY 31

HOWELL / LIVINGSTON COUNTY SPENCER J. HARDY (OZW)

APP CRS 312°	Rwy Idg TDZE Apt Elev	5002 943 962
------------------------	-----------------------------	---

▼ DME/DME RNP-0.3 NA. If local altimeter setting not received, use Bishop Intl altimeter setting and increase all MDAs 80 feet.

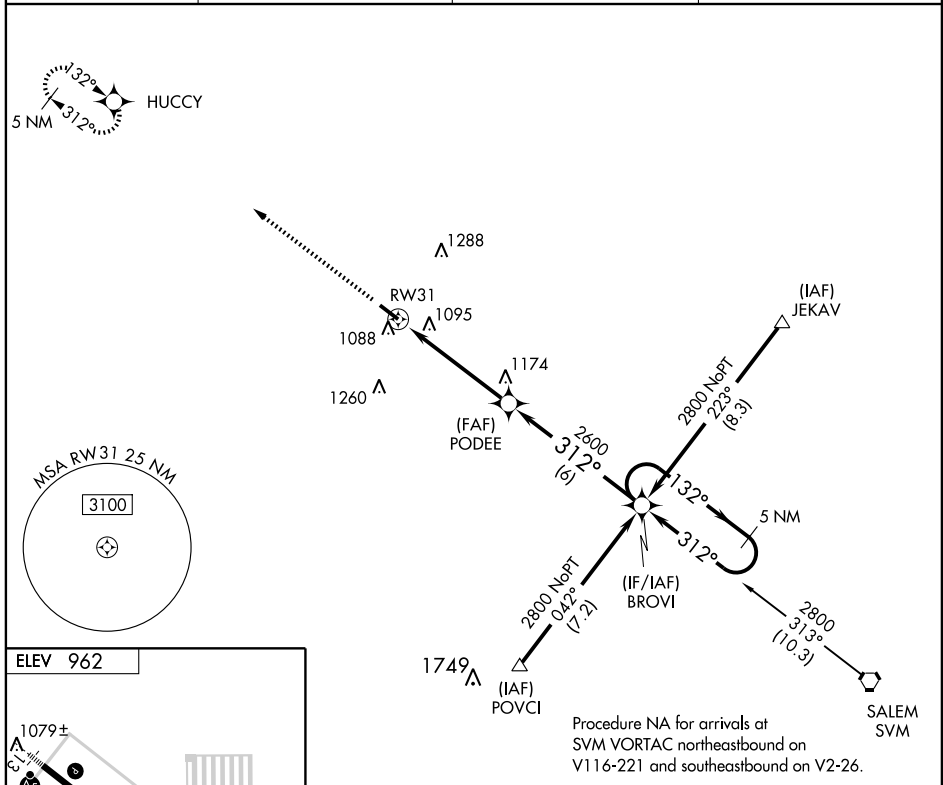
MISSED APPROACH: Climb to 3000 direct HUCCY and hold.

AWOS-3
118.875

DETROIT APP CON
127.5 363.2

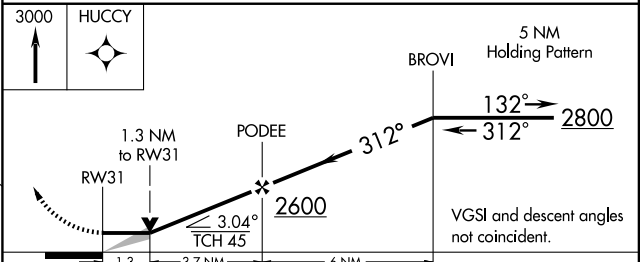
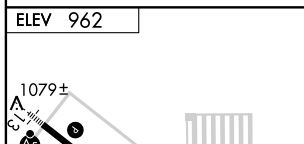
CLNC DEL
121.725 (GCO)

UNICOM
123.0 (CTAF) 0



EC-1, 22 OCT 2009 to 19 NOV 2009

EC-1, 22 OCT 2009 to 19 NOV 2009



HIRL Rwy 13-31 0
REIL Rwy 13 and 31 0

CATEGORY	A	B	C	D
RNAV MDA	1400-1	457 (500-1)	1400-1¼ 457 (500-1¼)	1400-1½ 457 (500-1½)
CIRCLING	1460-1	498 (500-1)	1460-1½ 498 (500-1½)	1520-2 558 (600-2)

HOWELL, MICHIGAN
Orig 07354

HOWELL / LIVINGSTON COUNTY SPENCER J. HARDY (OZW)
42°38'N - 83°59'W

RNAV (GPS) RWY 31