

HOWELL, MICHIGAN


AL-5485 (FAA)


# RNAV (GPS) RWY 13

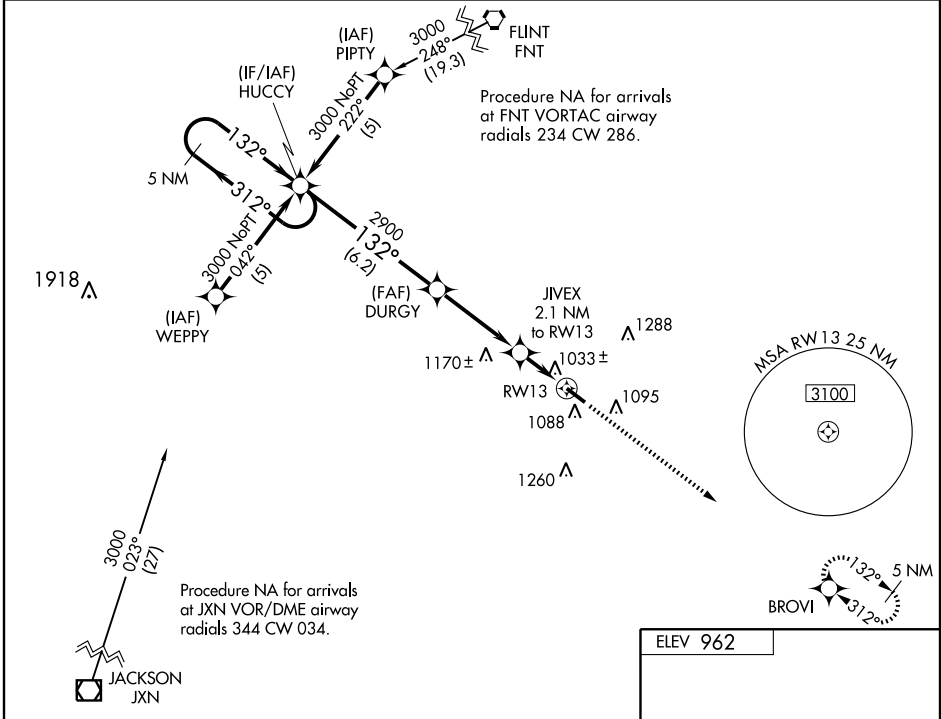
HOWELL / LIVINGSTON COUNTY SPENCER J. HARDY (OZW)

WAAS CH <b>69601</b> <b>W13A</b>	APP CRS <b>132°</b>	Rwy Idg <b>5002</b> TDZE <b>962</b> Apt Elev <b>962</b>
--	------------------------	---

**▼** DME/DME RNP-0.3 NA. If local altimeter setting not received, use Bishop Intl altimeter setting and increase all DAs/MDAs 80 feet. For uncompensated Baro-VNAV systems, LNAV/VNAV NA below -16°C (4°F) or above 47°C (117°F). Visibility reduction by helicopters NA. Baro-VNAV NA when using Bishop Intl altimeter setting.

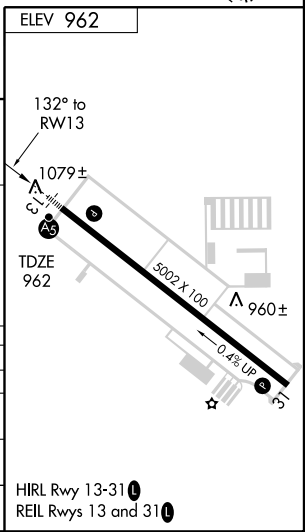
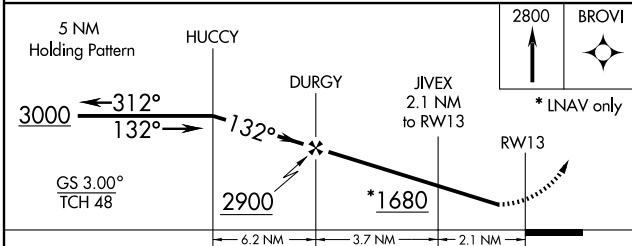
**MALSR**  
 MISSED APPROACH: Climb to 2800 direct BROVI and hold.

AWOS-3 <b>118.875</b>	DETROIT APP CON <b>127.5 363.2</b>	CLNC DEL <b>121.725 (GCO)</b>	UNICOM <b>123.0 (CTAF)</b> 
--------------------------	---------------------------------------	----------------------------------	---



EC-1, 22 OCT 2009 to 19 NOV 2009

EC-1, 22 OCT 2009 to 19 NOV 2009



CATEGORY	A	B	C	D
LPV DA		1244-1	282 (300-1)	
LNAV/VNAV DA		1324-1¼	362 (400-1¼)	
LNAV MDA		1300-1	338 (400-1)	
CIRCLING	1460-1¼	498 (500-1¼)	1460-1½ 498 (500-1½)	1520-2 558 (600-2)

HOWELL, MICHIGAN  
Amdt 1 07354

HOWELL / LIVINGSTON COUNTY SPENCER J. HARDY (OZW)  
42°38'N - 83°59'W

# RNAV (GPS) RWY 13