

HOWELL, MICHIGAN

AL-5485 (FAA)

NDB RWY 13

HOWELL / LIVINGSTON COUNTY SPENCER J. HARDY (OZW)

NDB OZW 243	APP CRS 119°	Rwy Idg 5002 TDZE 962 Apt Elev 962
-----------------------	------------------------	---

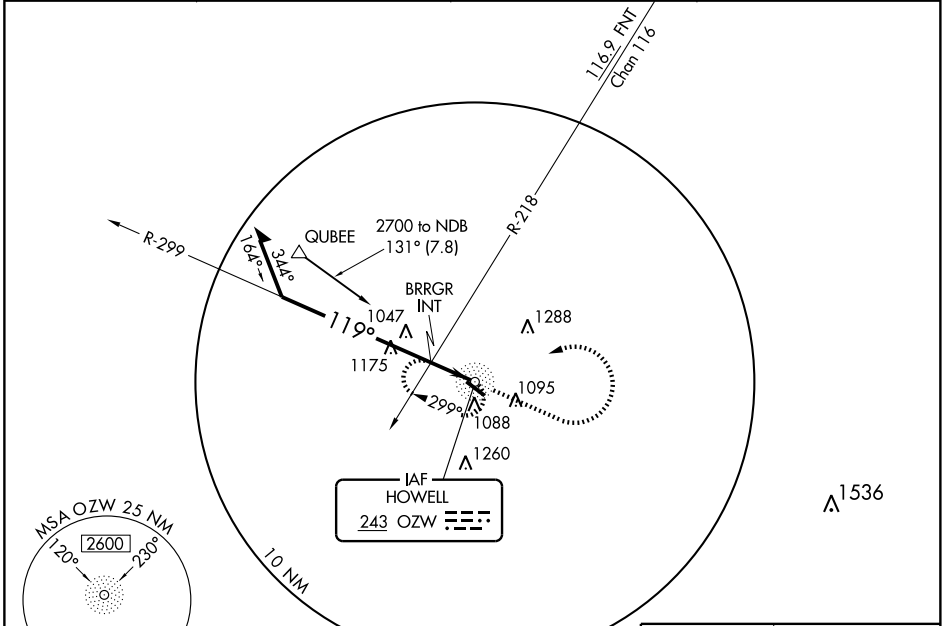
▽ If local altimeter setting not received, use Bishop Intl altimeter setting and increase all MDAs 80 feet. Visibility reduction by helicopters NA. BRRGR FIX minimums NA when using Bishop Intl altimeter setting.

▲ NA



MISSED APPROACH: Climb to 2700 then left turn direct OZW NDB and hold.

AWOS-3 118,875	DETROIT APP CON 127.5 363.2	CLNC DEL 121.725 (GCO)	UNICOM 123.0 (CTAF) 0
--------------------------	---------------------------------------	----------------------------------	---------------------------------



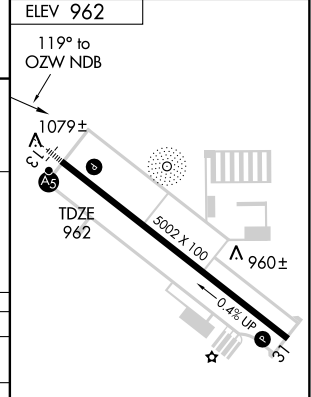
EC-1, 22 OCT 2009 to 19 NOV 2009

EC-1, 22 OCT 2009 to 19 NOV 2009



Remain within 10 NM	NDB	2700	OZW
		↑	○
			243
			243

VGSI and descent angles not coincident.



CATEGORY	A	B	C	D
S-13	1540-1	578 (600-1)	1540-1½ 578 (600-1½)	1540-1¾ 578 (600-1¾)
CIRCLING	1540-1	578 (600-1)	1540-1½ 578 (600-1½)	1540-2 578 (600-2)
BRRGR FIX MINIMUMS				
S-13	1380-1	418 (500-1)	1380-1¼	418 (500-1¼)
CIRCLING	1460-1	498 (500-1)	1460-1½ 498 (500-1½)	1520-2 558 (600-2)

HIRL Rwy 13-31 0	REIL Rws 13 and 31 0				
Knots	60	90	120	150	180
Min:Sec					

HOWELL, MICHIGAN
Amdt 3 07354

HOWELL / LIVINGSTON COUNTY SPENCER J. HARDY (OZW)
42°38'N - 83°59'W

NDB RWY 13