

HOWELL, MICHIGAN

AL-5485 (FAA)

LOC/DME I-OGO <b>108.55</b>	APP CRS <b>132°</b>	Rwy Idg TDZE Apt Elev	<b>5002</b> <b>962</b> <b>962</b>
Chan <b>22(Y)</b>			

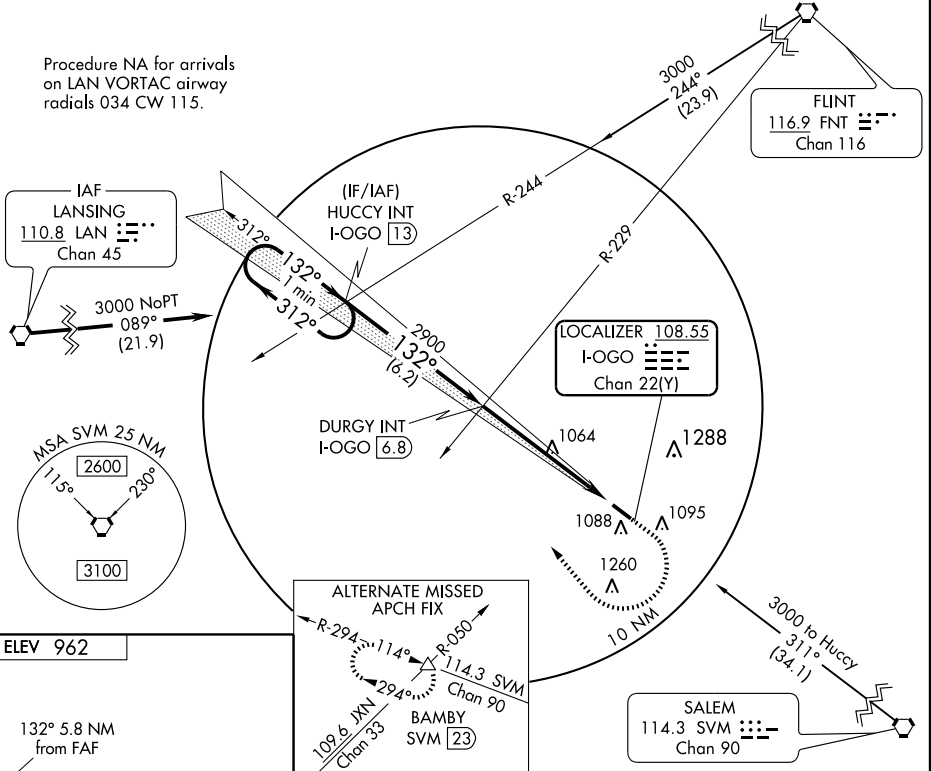
# ILS or LOC RWY 13

HOWELL / LIVINGSTON COUNTY SPENCER J. HARDY (OZW)

<b>NA</b>	If local altimeter setting not received, use Bishop Intl altimeter setting and increase all DAs/MDAs 80 feet.	MALSR	MISSED APPROACH: Climb to 1600 then climbing right turn to 3000 via heading 356° and I-OGO NW course to HUCCY Int/I-OGO 13 DME and hold.
-----------	---	-------	--

AWOS-3 <b>118.875</b>	DETROIT APP CON <b>127.5 363.2</b>	CLNC DEL <b>121.725 (GCO)</b>	UNICOM <b>123.0 (CTAF) 0</b>
--------------------------	---------------------------------------	----------------------------------	---------------------------------

Procedure NA for arrivals on LAN VORTAC airway radials 034 CW 115.



EC-1, 22 OCT 2009 to 19 NOV 2009

EC-1, 22 OCT 2009 to 19 NOV 2009

ELEV 962

132° 5.8 NM from FAF

1079± TDZE 962

5002x100

960±

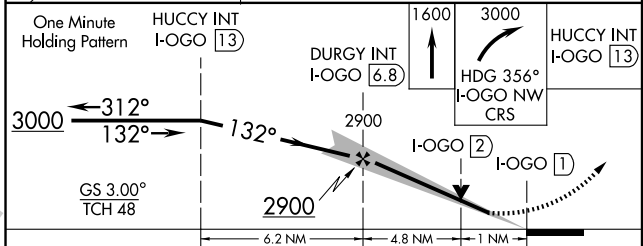
0.4% UP

HIRL Rwy 13-31

REIL Rwys 13 and 31

FAF to MAP 5.8 NM

Knots	60	90	120	150	180
Min:Sec	5:48	3:52	2:54	2:19	1:56



CATEGORY	A	B	C	D
S-ILS 13		1162-1/2	200 (200-1/2)	
S-LOC 13		1320-1/2	358 (400-1/2)	1320-3/4 358 (400-3/4)
CIRCLING	1460-1	498 (500-1)	1460-1 1/2 498 (500-1 1/2)	1520-2 558 (600-2)

HOWELL, MICHIGAN  
Orig 07354

HOWELL / LIVINGSTON COUNTY SPENCER J. HARDY (OZW)  
42°38'N - 83°59'W

# ILS or LOC RWY 13