

HILLSDALE, MICHIGAN

AL-5484 (FAA)

VOR/DME LFD 111.2 Chan 49	APP CRS 141°	Rwy Idg TDZE Apt Elev N/A N/A 1182
---	------------------------	--

VOR or GPS-A
HILLSDALE MUNI (JYM)

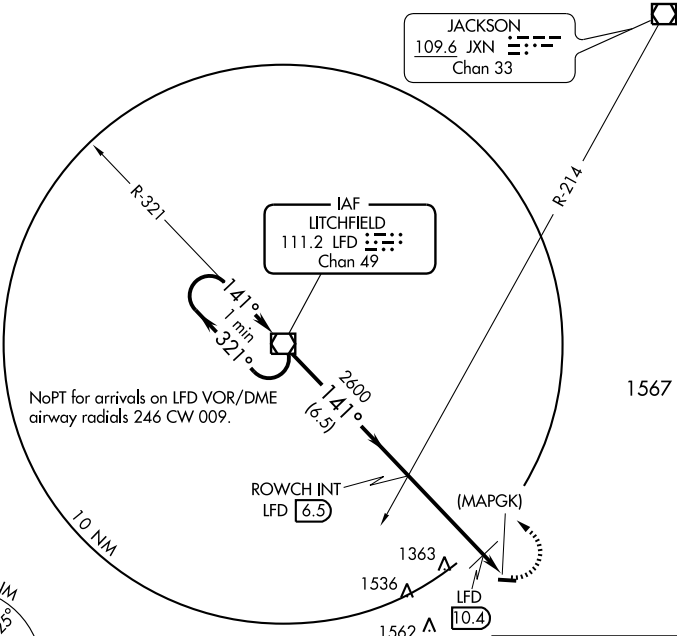


MISSED APPROACH: Climbing left turn to 2600 direct LFD VOR/DME and hold.

AWOS-3
121.025

TOLEDO APP CON
134.35 317.55

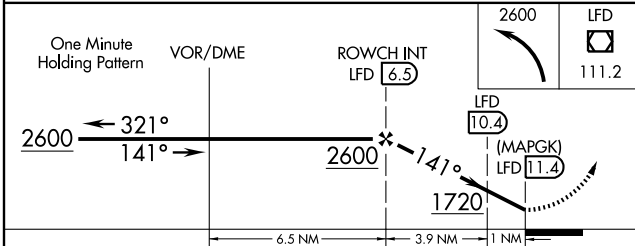
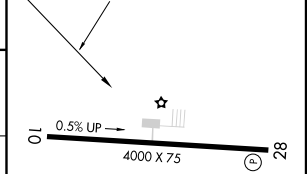
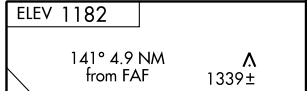
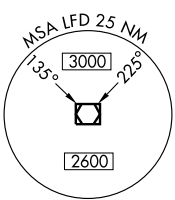
UNICOM
122.8 (CTAF)



JACKSON
109.6 JXN
Chan 33

EC-1, 22 OCT 2009 to 19 NOV 2009

EC-1, 22 OCT 2009 to 19 NOV 2009



CATEGORY	A	B	C	D
CIRCLING	1720-1 538 (600-1)		1720-1½ 538 (600-1½)	NA
DME MINIMUMS				
CIRCLING	1640-1 458 (500-1)		1640-1½ 458 (500-1½)	NA

ELEV 1182				
141° 4.9 NM from FAF 1339±				
REIL Rwy 28 MIRL Rwy 10-28				
FAF to MAP 4.9 NM				
Knots	60	90	120	150 180
Min:Sec	4:54	3:16	2:27	1:58 1:38

HILLSDALE, MICHIGAN
Amdt 7 04050

41°55'N - 84°35'W

HILLSDALE MUNI (JYM)
VOR or GPS-A