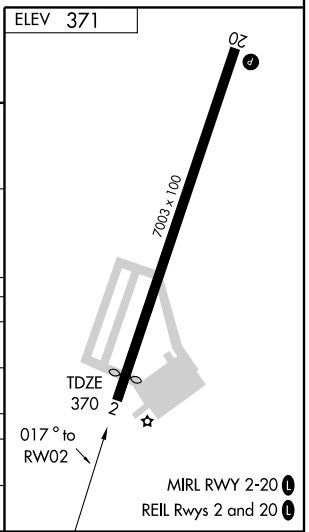
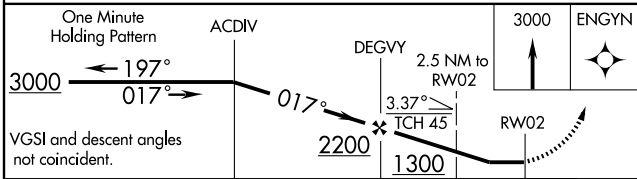
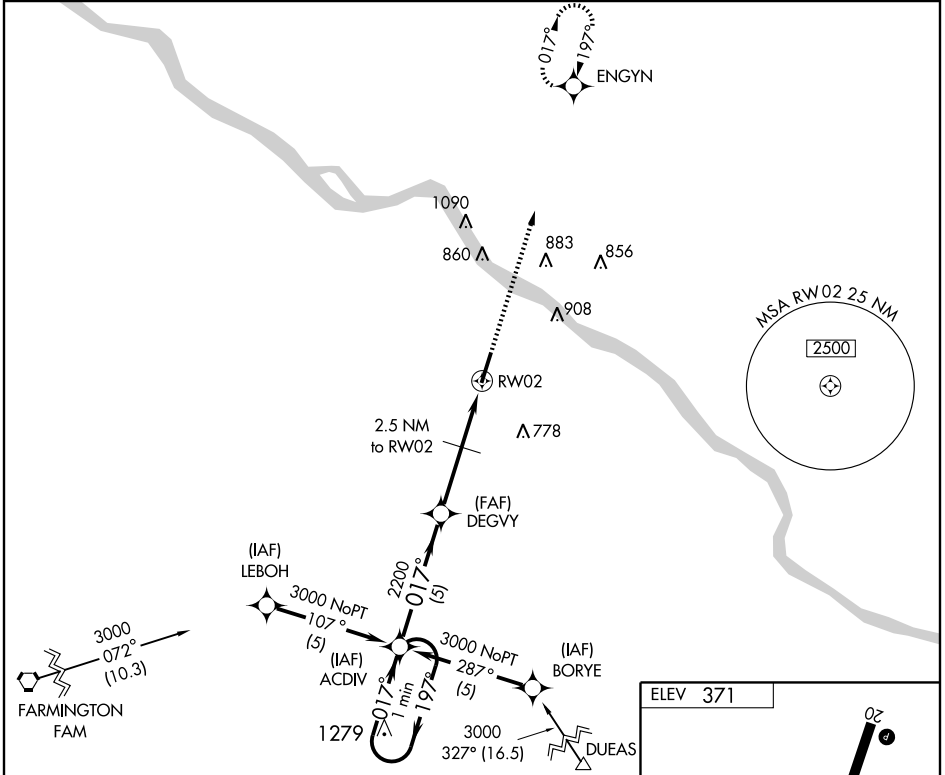


# GPS RWY 2

PERRYVILLE MUNI (K02)

APP CRS <b>017°</b>	Rwy Idg <b>6483</b>
	TDZE <b>370</b>
	Apt Elev <b>371</b>

<b>NA</b> Obtain local altimeter setting on CTAF; when not received, use Cape Girardeau altimeter setting.	MISSED APPROACH: Climb to 3000 direct ENGYN WP and hold.
KANSAS CITY CENTER <b>127.47 291.7</b>	UNICOM <b>122.8 (CTAF)</b>



CATEGORY	A	B	C	D
S-2	980-1	610 (700-1)	980-1¾ 610 (700-1¾)	980-2 610 (700-2)
CIRCLING	980-1	609 (700-1)	1020-1¾ 649 (700-1¾)	1020-2 649 (700-2)
CAPE GIRARDEAU ALTIMETER SETTING MINIMUMS				
S-2	1080-1	710 (800-1)	1080-2 710 (800-2)	1080-2¼ 710 (800-2¼)
CIRCLING	1080-1	709 (800-1)	1120-2¼ 749 (800-2¼)	1120-2½ 749 (800-2½)

NC-3, 22 OCT 2009 to 19 NOV 2009

NC-3, 22 OCT 2009 to 19 NOV 2009