

LAWRENCE, KANSAS

AL-5481 (FAA)

VOR/DME-A LAWRENCE MUNI (LWC)

VORTAC TOP 117.8 Chan 125	APP CRS 111°	Rwy Idg TDZE Apt Elev N/A N/A 833
---	------------------------	---

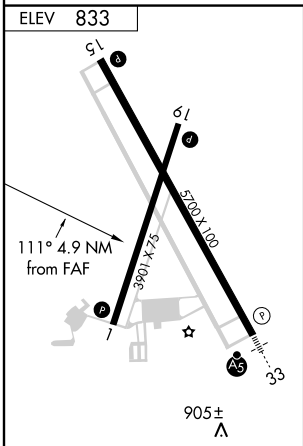
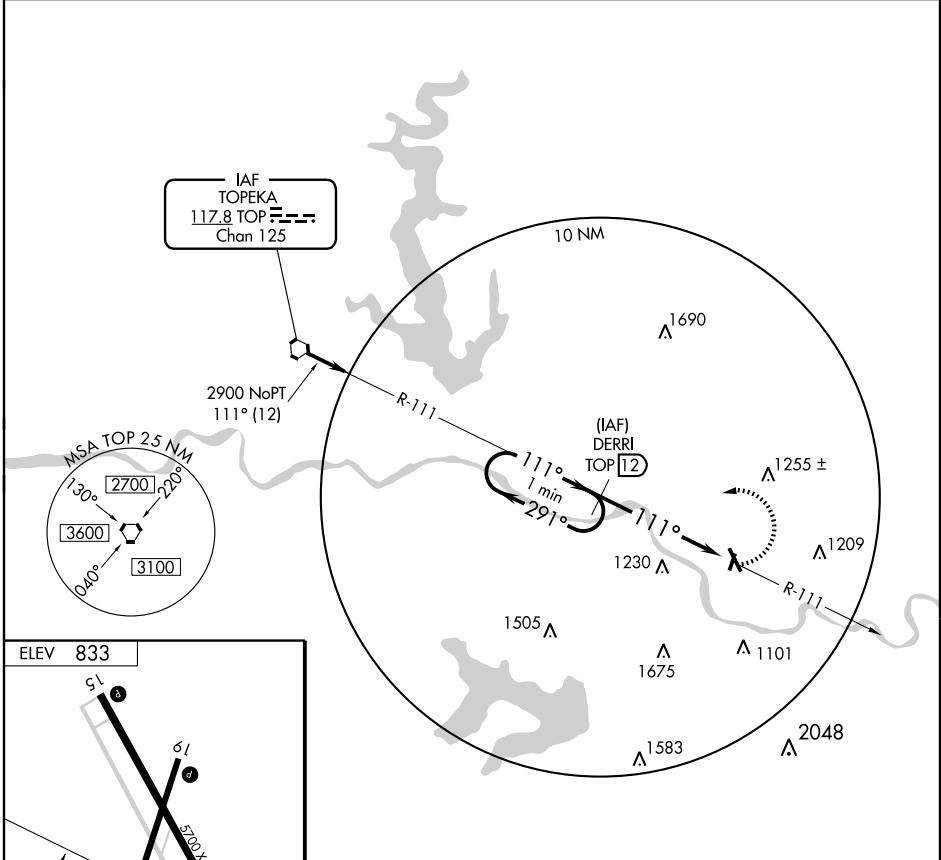
⚠ When local altimeter setting not received, use Philip Billard Muni altimeter setting and increase all MDA 60 feet and Cat C visibility ¼ mile.

MISSED APPROACH: Climbing left turn to 2900 via TOP VORTAC R-111 to DERRI 12 DME and hold.

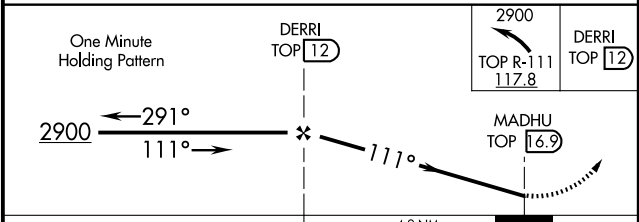
ASOS 121.225	KANSAS CITY CENTER 123.8 343.7	CLNC DEL 121.825	UNICOM 123.0 (CTAF) 0
------------------------	--	----------------------------	---------------------------------

NC-2, 22 OCT 2009 to 19 NOV 2009

NC-2, 22 OCT 2009 to 19 NOV 2009



MIRL Rwy's 1-19 and 15-33 **0**
REIL Rwy's 1 and 19 **0**



CATEGORY	A	B	C	D
CIRCLING	1480-1	647 (700-1)	1480-1¾ 647 (700-1¾)	NA

LAWRENCE, KANSAS
Amdt 10A 09239

39° 01' N-95° 13' W

LAWRENCE MUNI (LWC)
VOR/DME-A