


LAWRENCE, KANSAS

AL-5481 (FAA)

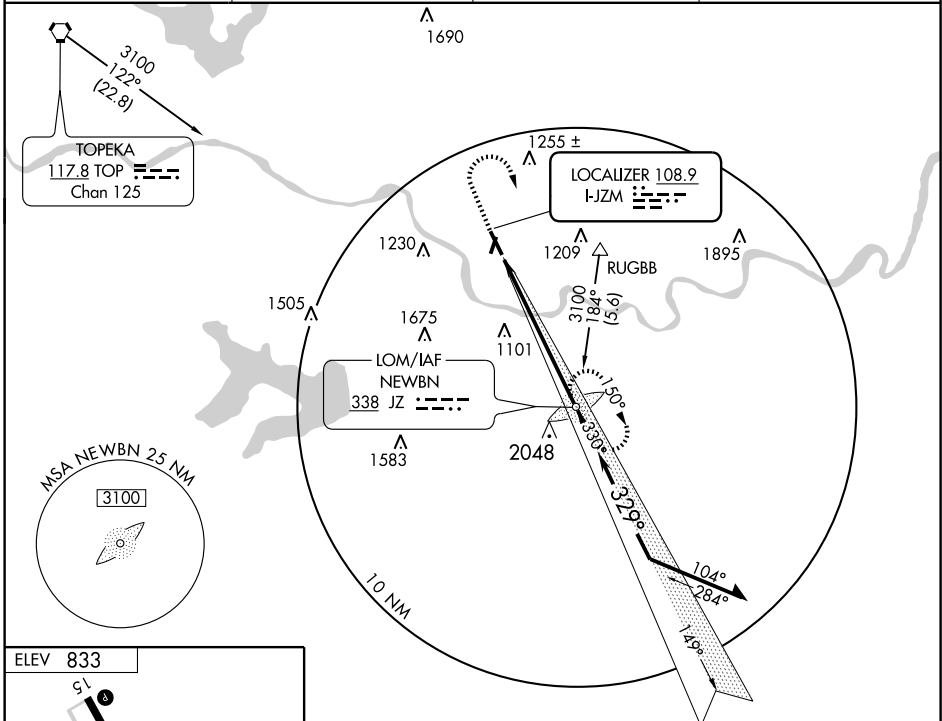
LOC I-JZM 108.9	APP CRS 329°	Rwy Idg 5700 TDZE 831 Apt Elev 833
---------------------------	------------------------	---

ILS or LOC RWY 33

LAWRENCE MUNI (LWC)

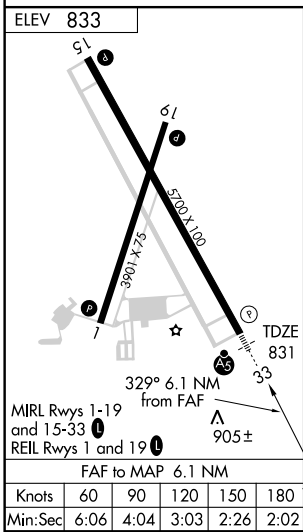
<p>⚠ When local altimeter setting not received, use Philip Billard Muni altimeter setting and increase all DA 52 feet and all MDA 60 feet.</p>	<p>MALSR </p>	<p>MISSED APPROACH: Climb to 2000 then climbing right turn to 3100 direct NEWBN LOM and hold.</p>
--	---	---

ASOS 121.225	KANSAS CITY CENTER 123.8 343.7	CLNC DEL 121.825	UNICOM 123.0 (CTAF) 0
------------------------	--	----------------------------	---------------------------------

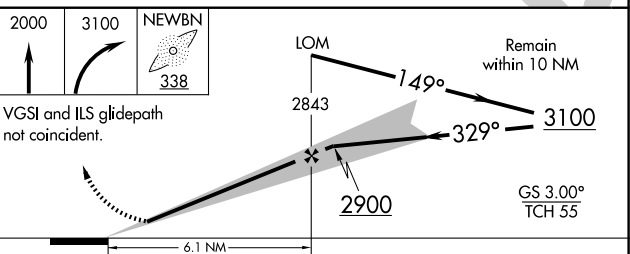


NC-2, 22 OCT 2009 to 19 NOV 2009

NC-2, 22 OCT 2009 to 19 NOV 2009



ADF REQUIRED



CATEGORY	A	B	C	D
S-ILS 33	1031-1/2 200 (200-1/2)			NA
S-LOC 33	1260-1/2	429 (500-1/2)	1260-3/4 429 (500-3/4)	NA
CIRCLING	1420-1	587 (600-1)	1440-1 3/4 607 (700-1 3/4)	NA

LAWRENCE, KANSAS
Amdt 1B 09239

39° 01' N-95° 13' W

LAWRENCE MUNI (LWC) ILS or LOC RWY 33