

ALEXANDER CITY, ALABAMA

AL-5480 (FAA)

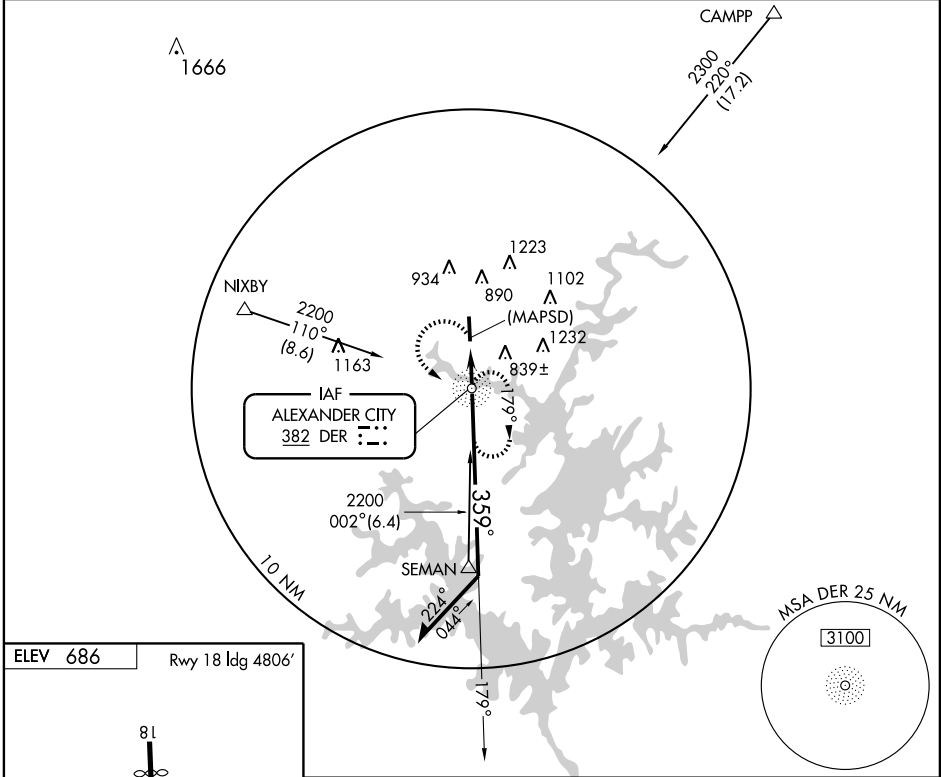
NDB or GPS-A

ALEXANDER CITY/ THOMAS C. RUSSELL FIELD (ALX)

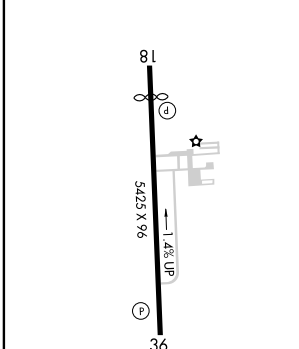
NDB DER 382	APP CRS 359°	Rwy ldg TDZE Apt Elev	N/A N/A 686
-----------------------	------------------------	-----------------------------	--

▼ Obtain local altimeter setting on CTAF: if not received, use Montgomery altimeter setting. **MISSED APPROACH:** Climbing left turn to 2200 direct DER NDB and hold.

AWOS-3 118.325	MONTGOMERY APP CON ★ 121.2 380.225	UNICOM 122.7 (CTAF) 0
--------------------------	--	---------------------------------



ELEV 686	Rwy 18 ldg 4806'
----------	------------------

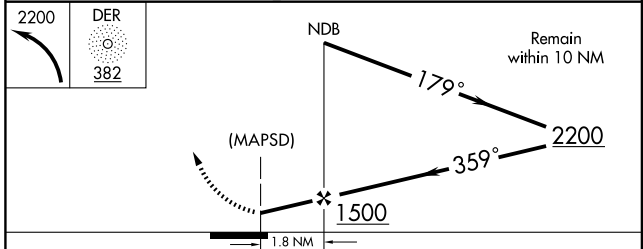


REIL Rwy 36
MIRL Rwy 18-36

FAF to MAP 1.8 NM

Knots	60	90	120	150	180
Min:Sec	1:48	1:12	0:54	0:43	0:36

359° 1.8 NM from FAF



CATEGORY	A	B	C	D
CIRCLING	1180-1 494 (500-1)	1200-1 514 (600-1)	1200-1½ 514 (600-1½)	NA
MONTGOMERY ALTIMETER SETTING MINIMUMS				
CIRCLING	1360-1 674 (700-1)	1400-1 714 (800-1)	1400-2 714 (800-2)	NA

ALEXANDER CITY, ALABAMA
Amdt 1A 06159

ALEXANDER CITY/ THOMAS C. RUSSELL FIELD (ALX)
32°55'N-85°58'W
NDB or GPS-A

SE-4, 22 OCT 2009 to 19 NOV 2009

SE-4, 22 OCT 2009 to 19 NOV 2009