

MICHIGAN CITY, INDIANA

AL-5479 (FAA)

VORTAC GJ 115.4 Chan 101	APP CRS 260°	Rwy ldg TDZE Apr Elev	N/A N/A 655
--	------------------------	-----------------------------	--

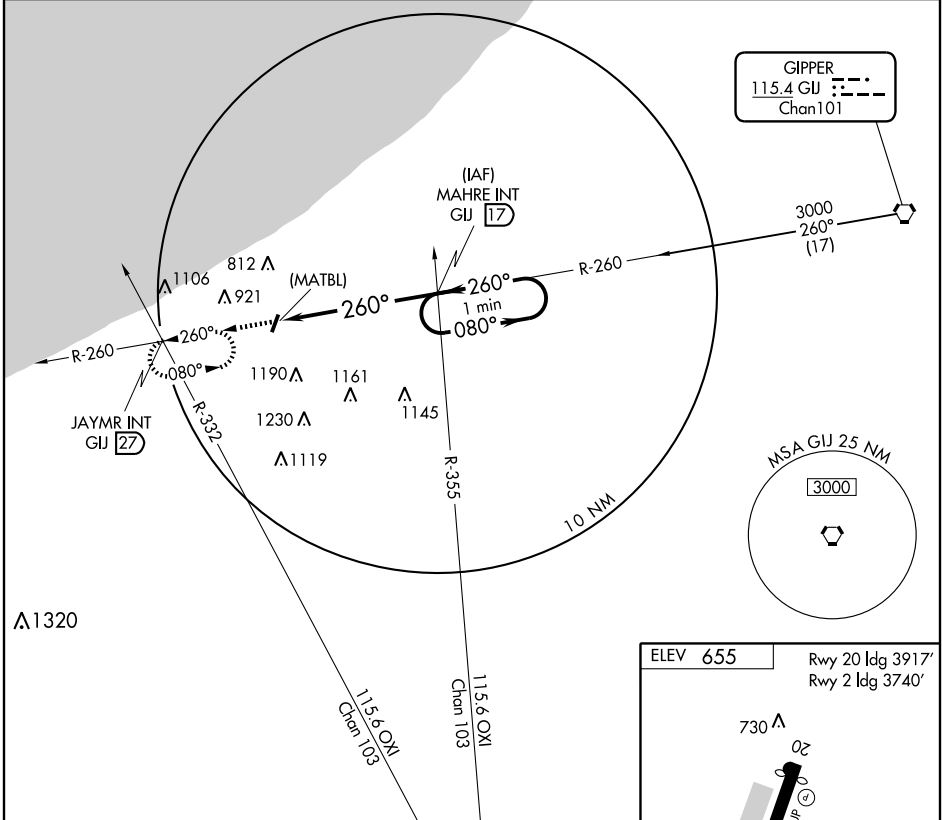
VOR or GPS-A

MICHIGAN CITY MUNI (MGC)

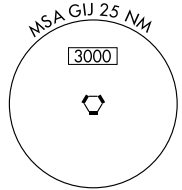
▽ Use South Bend altimeter setting. **▲** NA

MISSED APPROACH: Climb to 3000 via GJ R-260 to JAYMR Int/27 DME and hold.

SOUTH BEND APP CON ★ 118.55	CLNC DEL 134.8	UNICOM 122.7 (CTAF) 0
---------------------------------------	--------------------------	--

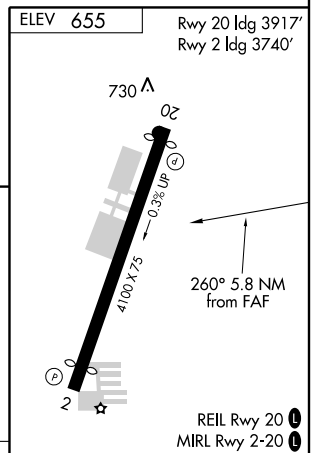
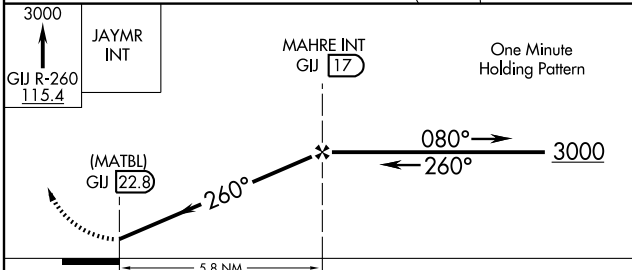


GIPPER
115.4 GJ
Chan 101



EC-2, 22 OCT 2009 to 19 NOV 2009

EC-2, 22 OCT 2009 to 19 NOV 2009



CATEGORY	A	B	C	D	FAF to MAP 5.8 NM					
	1540-1¼	885 (900-1¼)	1540-2¾ 885 (900-2¾)	NA	Knots	60	90	120	150	180
CIRCLING					Min:Sec	5:48	3:52	2:54	2:19	1:56

MICHIGAN CITY, INDIANA
Amdt 4 03135

41°42'N - 86°49'W

VOR or GPS-A