

MICHIGAN CITY, INDIANA

AL-5479 (FAA)

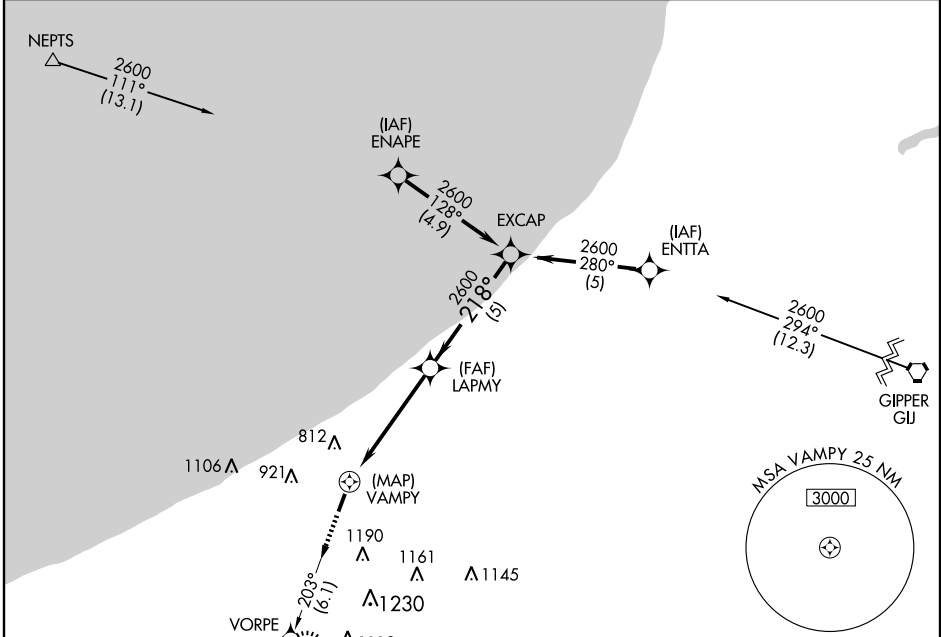
GPS RWY 20

MICHIGAN CITY MUNI (MGC)

APP CRS	Rwy ldg	4100
218°	TDZE	655
	Apt Elev	655

NA	Use South Bend altimeter setting.	MISSED APPROACH: Climb to 3000 via 203° course to VORPE WP and hold.
----	-----------------------------------	--

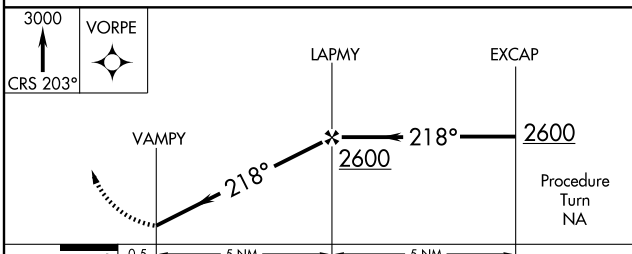
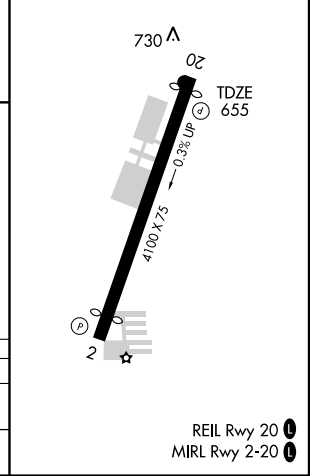
SOUTH BEND APP CON ★ 118.55	CLNC DEL 134.8	UNICOM 122.7 (CTAF)
---------------------------------------	--------------------------	-------------------------------



EC-2, 22 OCT 2009 to 19 NOV 2009

EC-2, 22 OCT 2009 to 19 NOV 2009

ELEV 655	Rwy 20 ldg 3917'
	Rwy 2 ldg 3740'



CATEGORY	A	B	C	D
S-20	1240-1	585 (600-1)	1240-1½ 585 (600-1½)	NA
CIRCLING	1240-1 585 (600-1)	1280-1 625 (700-1)	1280-1¾ 625 (700-1¾)	NA

MICHIGAN CITY, INDIANA
Amdt 1 02332

41°42'N - 86°49'W

MICHIGAN CITY MUNI (MGC)

GPS RWY 20

REIL Rwy 20
MIRL Rwy 2-20