

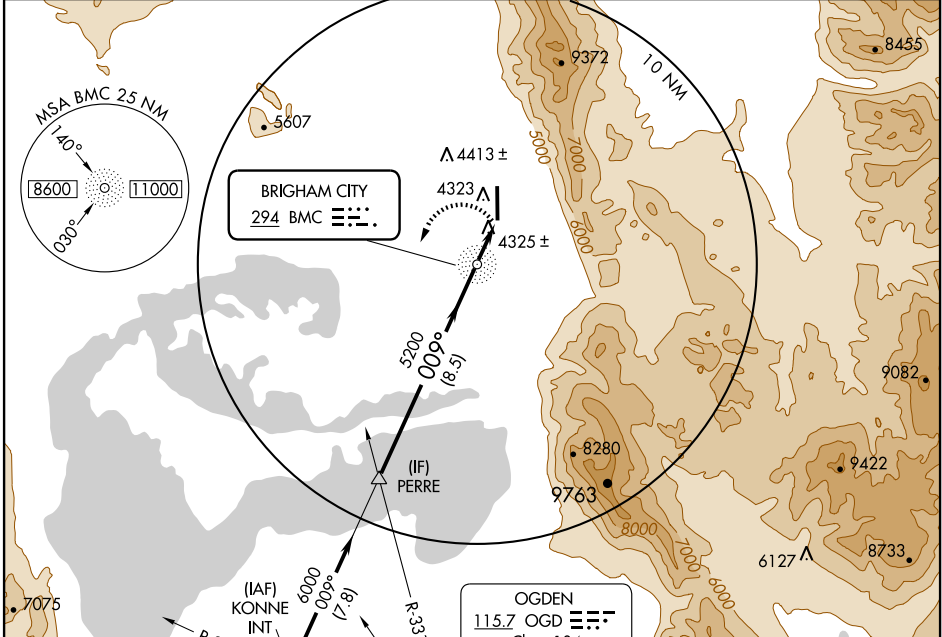
NDB-A

BRIGHAM CITY (BMC)

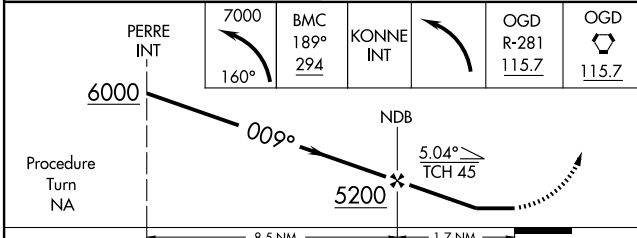
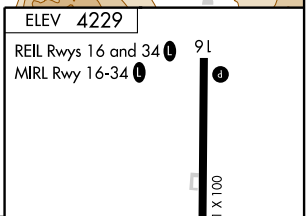
NDB BMC 294	APP CRS 009°	Rwy Idg TDZE Apt Elev	N/A N/A 4229
-----------------------	------------------------	-----------------------------	---

<p>▽ When local altimeter setting not received, use Ogdén-Hinckley altimeter setting and increase all MDA 100 feet and Cat C visibility ¼ mile.</p> <p>△ NA</p>	<p>MISSED APPROACH: Climbing left turn to 7000 via heading 160° and BMC NDB 189° bearing to KONNE Int and left turn via OGD R-281 to OGD VORTAC and hold.</p>
---	---

AWOS-3 135.075	SALT LAKE CITY APP CON 121.1 319.25	CLNC DEL 126.0	UNICOM 123.05 (CTAF) 0
--------------------------	---	--------------------------	----------------------------------



Procedure NA for arrivals at OGD VORTAC via airway radials 263 CW 331.



CATEGORY	A	B	C	D	FAF to MAP 1.7 NM					
CIRCLING	4640-1 411 (500-1)	4680-1 451 (500-1)	4840-1¾ 611 (700-1¾)	NA	Knots	60	90	120	150	180
					Min:Sec	1:42	1:08	0:51	0:41	0:34

SW-4, 22 OCT 2009 to 19 NOV 2009

SW-4, 22 OCT 2009 to 19 NOV 2009