

(SETHY2.SETHY) 09239

SL-5475 (FAA)

BLACKSBURG/VIRGINIA TECH/MONTGOMERY EXECUTIVE (BCB)

SETHY TWO DEPARTURE (RNAV)

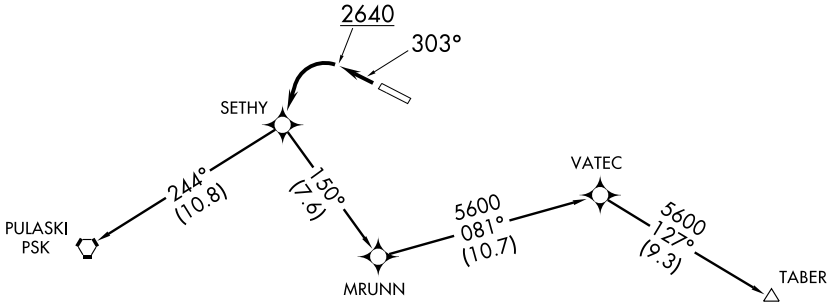
BLACKSBURG, VIRGINIA

AWOS-3 133.325
CTAF 123.05
ROANOKE DEP CON
126.9 339.8
ROANOKE CLNC DEL
124.85

NOTE: Aircraft on TABER transition,
do not exceed 220 KIAS until
passing SETHY.

ROANOKE
ROA

WOODRUM
ODR



NOTE: GPS Required.
NOTE: RNAV 1.
NOTE: RADAR Required.
NOTE: When in RADAR contact expect vectors to filed/assigned route.

TAKE-OFF OBSTACLES

Rwy 30:

- Trees beginning 90' from DER, 461' left of centerline, up to 46' AGL/2140' MSL.
- Fence and OL pole beginning 546' from DER, 161' left of centerline, up to 12' AGL/2139' MSL.
- Vehicle on road beginning 567' from DER, 310' left of centerline, up to 24' AGL/2137' MSL.
- Trees beginning 2080' from DER, 788' left of centerline, up to 100' AGL/2201' MSL.
- Fence 861' from DER, 52' right of centerline, up to 12' AGL/2135' MSL.
- Trees beginning 539' from DER, 326' right of centerline, up to 40' AGL/2153' MSL.
- Trees beginning 1328' from DER, 117' right of centerline, up to 100' AGL/2182' MSL.
- Terrain beginning 330' from DER, 366' right of centerline, up to 2138' MSL.
- Pole and antenna beginning 1149' from DER, 391' right of centerline, up to 40' AGL/2151' MSL.

TAKE-OFF MINIMUMS

Rwy 12: NA-ATC.

Rwy 30: Standard with minimum climb of 300' per NM to 2640.

NOTE: Chart not to scale.



DEPARTURE ROUTE DESCRIPTION

TAKE-OFF RUNWAY 30: Climb heading 303° to 2640, then left turn direct SETHY, Thence

. . . . Maintain 6000, expect clearance to filed altitude/flight level 10 minutes after departure.

PULASKI TRANSITION (SETHY2.PSK)

TABER TRANSITION (SETHY2.TABER)

SETHY TWO DEPARTURE (RNAV)

BLACKSBURG, VIRGINIA

(SETHY2.SETHY) 09239

BLACKSBURG/VIRGINIA TECH/MONTGOMERY EXECUTIVE (BCB)

NE-3, 22 OCT 2009 to 19 NOV 2009

NE-3, 22 OCT 2009 to 19 NOV 2009