

BLACKSBURG, VIRGINIA

AL-5475 (FAA)

RNAV (GPS) RWY 30

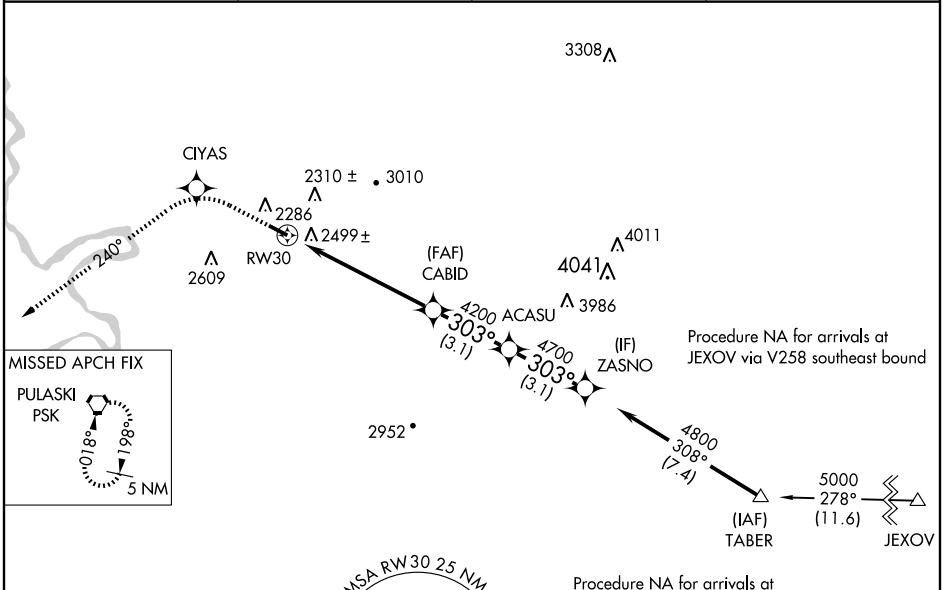
BLACKSBURG/VIRGINIA TECH/MONTGOMERY EXECUTIVE (BCB)

APP CRS	Rwy Idg	4539
303°	TDZE	2132
	Apt Elev	2132

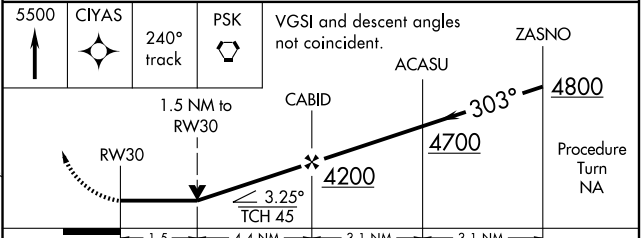
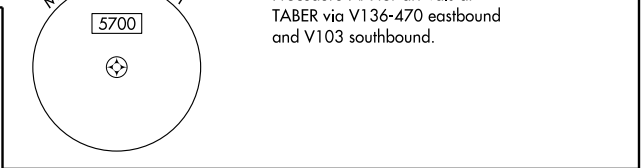
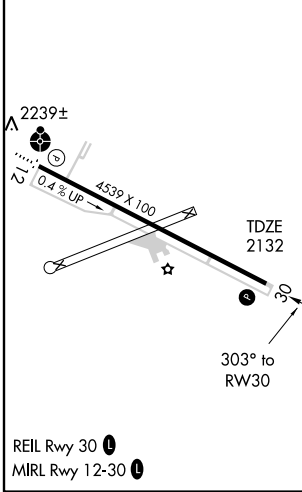
⚠ DME/DME RNP-0.3 NA.
 When local altimeter setting not received, use Dublin altimeter setting and increase all MDA 40 feet and Circling Cat C visibility ¼ mile.
 VDP NA when using Dublin altimeter setting.

MISSED APPROACH: Climb to 5500 direct CIYAS and via 240° track to PSK VORTAC and hold.

AWOS-3 133.325	ROANOKE APP CON 126.9 339.8	ROANOKE CLNC DEL 124.85	UNICOM 123.05 (CTAF) 0
--------------------------	---------------------------------------	-----------------------------------	----------------------------------



ELEV **2132**



CATEGORY	A	B	C	D
LNAV MDA	2760-1	628 (700-1)	2760-1¾ 628 (700-1¾)	NA
CIRCLING	2800-1	668 (700-1)	2800-1¾ 668 (700-1¾)	NA

BLACKSBURG, VIRGINIA
 Orig 09127

BLACKSBURG/VIRGINIA TECH/MONTGOMERY EXECUTIVE (BCB)
 37°12'N - 80°24'W

RNAV (GPS) RWY 30

NE-3, 22 OCT 2009 to 19 NOV 2009

NE-3, 22 OCT 2009 to 19 NOV 2009