

RNAV (GPS) RWY 12

BLACKSBURG/VIRGINIA TECH/MONTGOMERY EXECUTIVE (BCB)

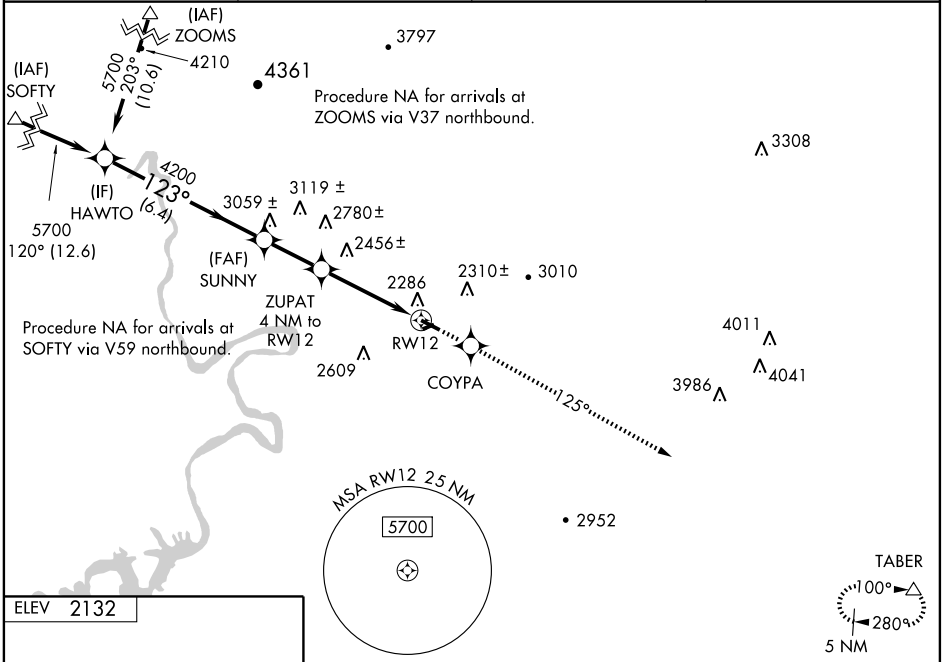
WAAS CH 86712 W12A	APP CRS 123°	Rwy Idg TDZE Apt Elev	4539 2113 2132
---------------------------------	------------------------	-----------------------------	---

⚠ Inoperative table does not apply. For uncompensated Baro-VNAV systems, LNAV/VNAV NA below -19°C (-2°F) or above 54°C (130°F). DME/DME RNP-0.3 NA. Visibility reduction by helicopters NA. When local altimeter setting not received, use Dublin altimeter setting and increase all DA/MDA 40 feet. Increase LNAV and Circling Cat C visibility ¼ mile.

ODALS

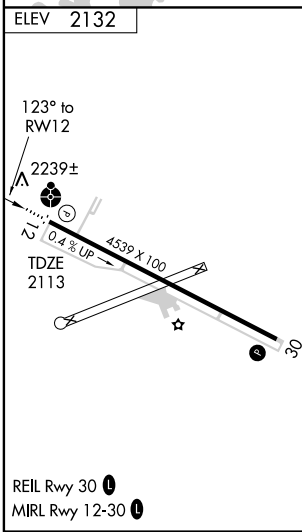
MISSED APPROACH: Climb to 5500 direct COYPA and via 125° track to TABER and hold.

AWOS-3 133.325	ROANOKE APP CON 126.9 339.8	ROANOKE CLNC DEL 124.85	UNICOM 123.05 (CTAF)
--------------------------	---------------------------------------	-----------------------------------	--------------------------------



NE-3, 22 OCT 2009 to 19 NOV 2009

NE-3, 22 OCT 2009 to 19 NOV 2009



HAWT0 Procedure Turn NA GS 3.00° TCH 45	VGS1 and RNAV glidepath not coincident.		5500	COYPA	125° track	TABER
	5700	4200	ZUPAT 4 NM to RW12	* 3440	RW12	* LNAV only.
	6.4 NM	2.3 NM	4 NM			
CATEGORY	A	B	C	D		
LPV DA	2506-1½	393 (400-1½)		NA		
LNAV/VNAV DA	2586-1¾	473 (500-1¾)		NA		
LNAV MDA	2700-1	587 (600-1)	2700-1½ 587 (600-1½)	NA		
CIRCLING	2800-1	668 (700-1)	2800-1¾ 668 (700-1¾)	NA		