

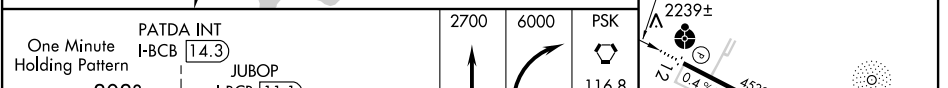
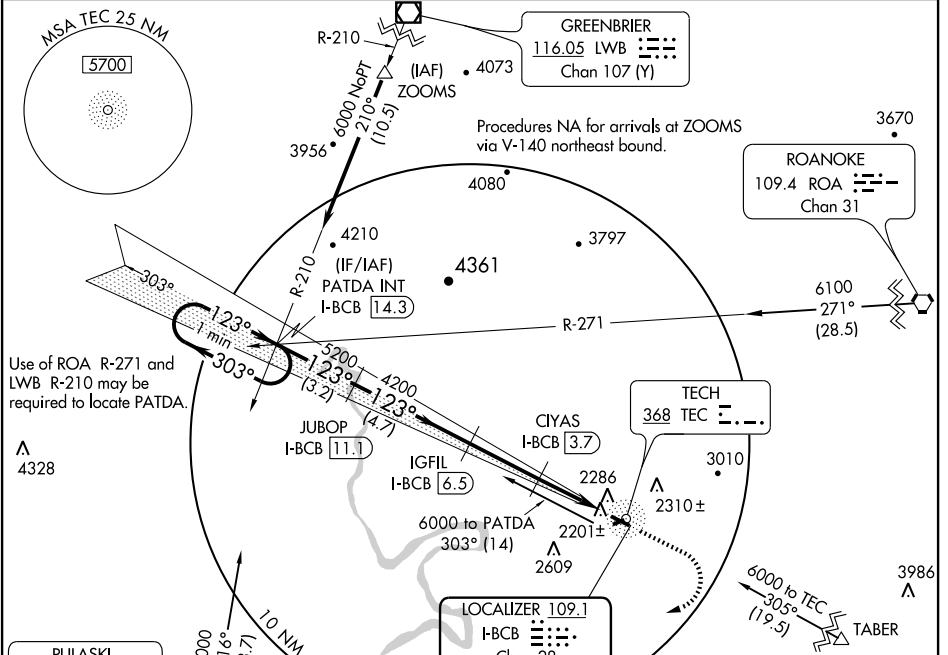
LOC/DME RWY 12

LOC/DME I-BCB 109.1 Chan 28	APP CRS 123°	Rwy Idg TDZE Apt Elev	4539 2113 2132
--	------------------------	-----------------------------	---

BLACKSBURG/VIRGINIA TECH/MONTGOMERY EXECUTIVE (BCB)

▼ Inoperative table does not apply.	ODALS	MISSED APPROACH: Climb to 2700 then climbing right turn to 6000 direct PSK VORTAC and hold.
▲ NA When VGSI inop, procedure NA at night.		

AWOS-3 133.325	ROANOKE APP CON 126.9 339.8	ROANOKE CLNC DEL 124.85	UNICOM 123.05 (CTAF)
--------------------------	---------------------------------------	-----------------------------------	--------------------------------



	PATDA INT I-BCB 14.3	JUBOP I-BCB 11.1	IGFIL I-BCB 6.5	CYAS I-BCB 3.7	I-BCB 0.8
	3.2 NM	4.7 NM	2.8 NM	2.9 NM	
	TCH 45				

CATEGORY	A	B	C	D
S-12	2460-1 347 (400-1)		NA	NA
CIRCLING	2800-1 668 (700-1)		2800-1¾ 668 (700-1¾)	NA

REIL Rwy 30
MIRL Rwy 12-30