

EASTMAN, GEORGIA

AL-5469 (FAA)

VORTAC VNA 116.5 Chan 112	APP CRS 088°	Rwy Idg TDZE Apt Elev	N/A N/A 304
---	------------------------	-----------------------------	--

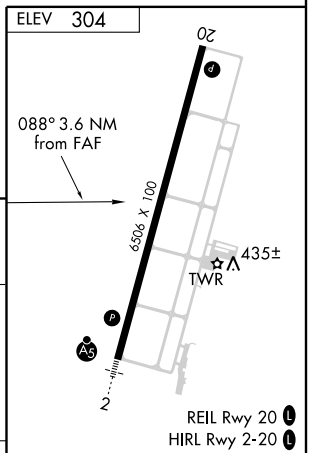
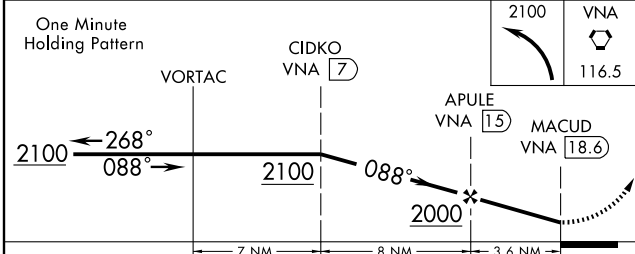
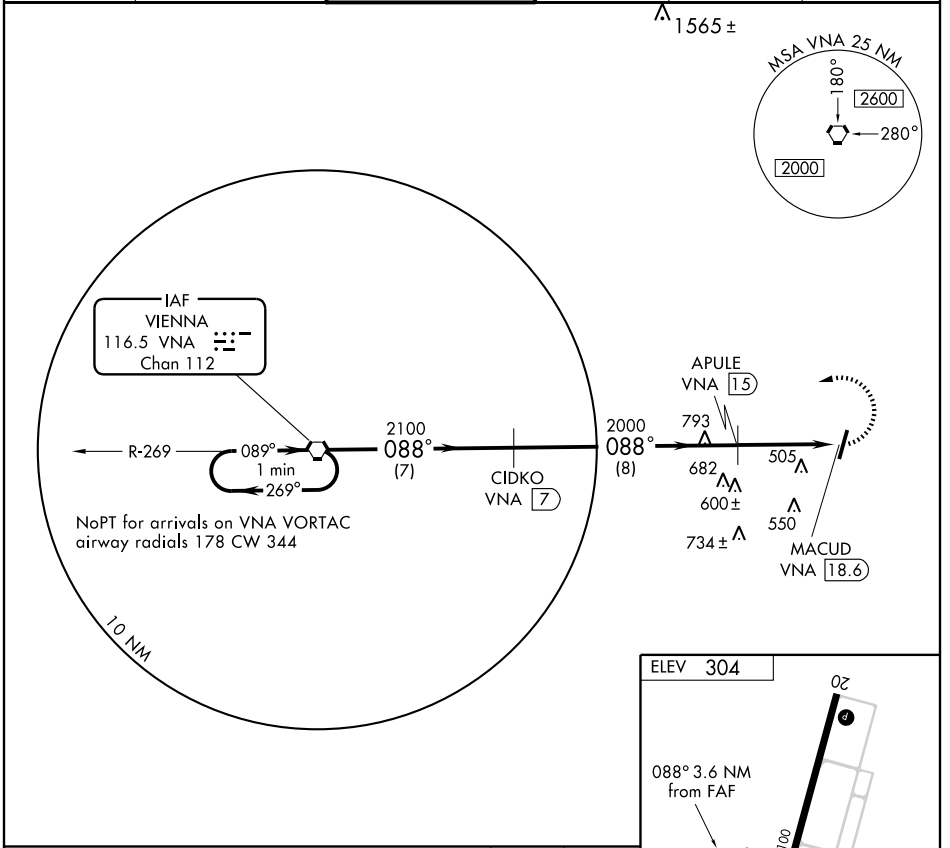
VOR/DME-A

EASTMAN/HEART OF GEORGIA RGNL (E_ZM)

▼ **NA** When local altimeter setting not received, use Dublin altimeter setting and increase all MDAs 60 feet.

MISSED APPROACH: Climbing left turn to 2100 direct VNA VORTAC and hold.

ATIS 119.425	ATLANTA APP CON * 124.2 279.6	EASTMAN TOWER * 124.55 (CTAF) 0	GND CON 121.175	GCO 121.725	UNICOM 123.0
------------------------	---	--	---------------------------	-----------------------	------------------------



CATEGORY	A	B	C	D	Knots	60	90	120	150	180
CIRCLING	760-1 456 (500-1)	820-1 516 (600-1)	820-1½ 516 (600-1½)	860-2 556 (600-2)	Min:Sec					

EASTMAN, GEORGIA
Amdt 8 08017

32°13'N - 83°08'W

EASTMAN/HEART OF GEORGIA RGNL (E_ZM)
VOR/DME-A

SE-4, 22 OCT 2009 to 19 NOV 2009

SE-4, 22 OCT 2009 to 19 NOV 2009