

# RNAV (GPS) RWY 2

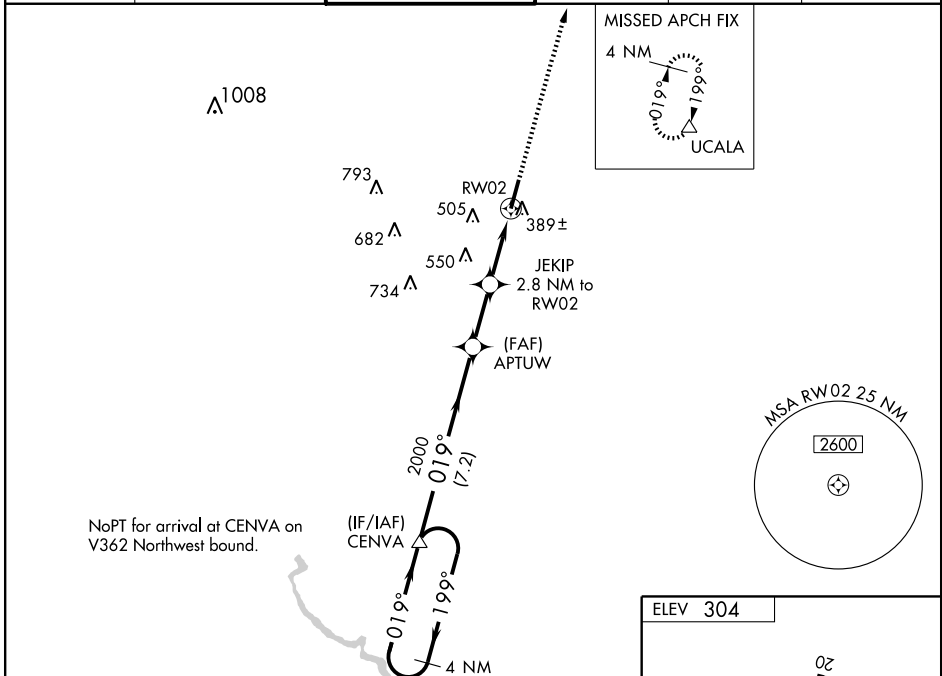
EASTMAN/ HEART OF GEORGIA RGNL (E2M)

WAAS CH <b>82104</b> <b>W02A</b>	APP CRS <b>019°</b>	Rwy Idg <b>6506</b> TDZE <b>300</b> Apt Elev <b>304</b>
--	------------------------	---

▼ **NA** For uncompensated Baro-VNAV systems, LNAV/VNAV NA below -15° C (5°F) or above 48° C (118°F). DME/DME RNP-0.3 NA. Baro-VNAV and VDP NA when using Dublin altimeter setting. For inoperative MALSR, increase LPV all Cats visibility ½ mile when using Dublin altimeter setting. When local altimeter setting not received, use Dublin altimeter setting and increase all DAs/MDAs 60 feet and LPV all Cats, LNAV/VNAV all Cats, LNAV Cat. C and D visibilities ¼ mile.

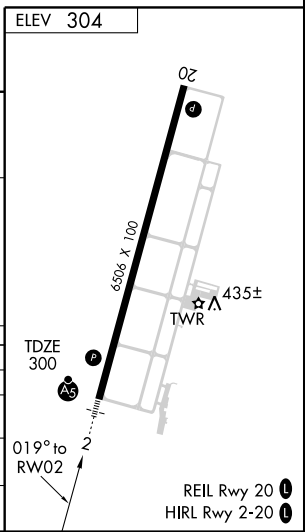
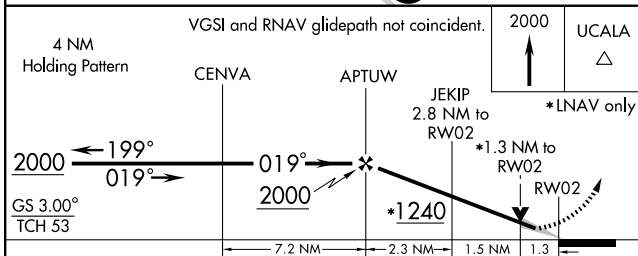
MALSR MISSED APPROACH: Climb to 2000 direct UCALA and hold.

ATIS <b>119.425</b>	ATLANTA APP CON * <b>124.2 279.6</b>	EASTMAN TOWER * <b>124.55 (CTAF)</b>	GND CON <b>121.175</b>	GCO <b>121.725</b>	UNICOM <b>123.0</b>
------------------------	---	---	---------------------------	-----------------------	------------------------



SE-4, 22 OCT 2009 to 19 NOV 2009

SE-4, 22 OCT 2009 to 19 NOV 2009



CATEGORY	A	B	C	D
LPV DA	550-½ 250 (300-½)			
LNAV/VNAV DA	798-1¼ 498 (500-1¼)			
LNAV MDA	760-½ 460 (500-½)	760-¾ 460 (500-¾)	760-1 460 (500-1)	
CIRCLING	760-1 456 (500-1)	820-1 516 (600-1)	820-1½ 516 (600-1½)	860-2 556 (600-2)

# RNAV (GPS) RWY 2