

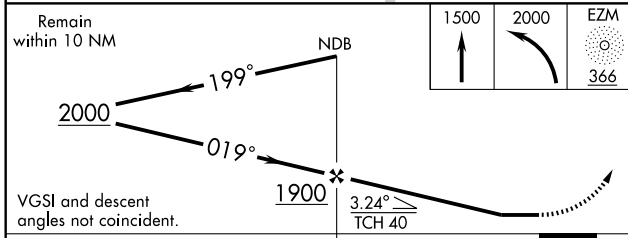
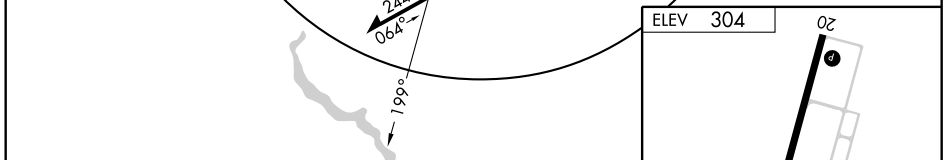
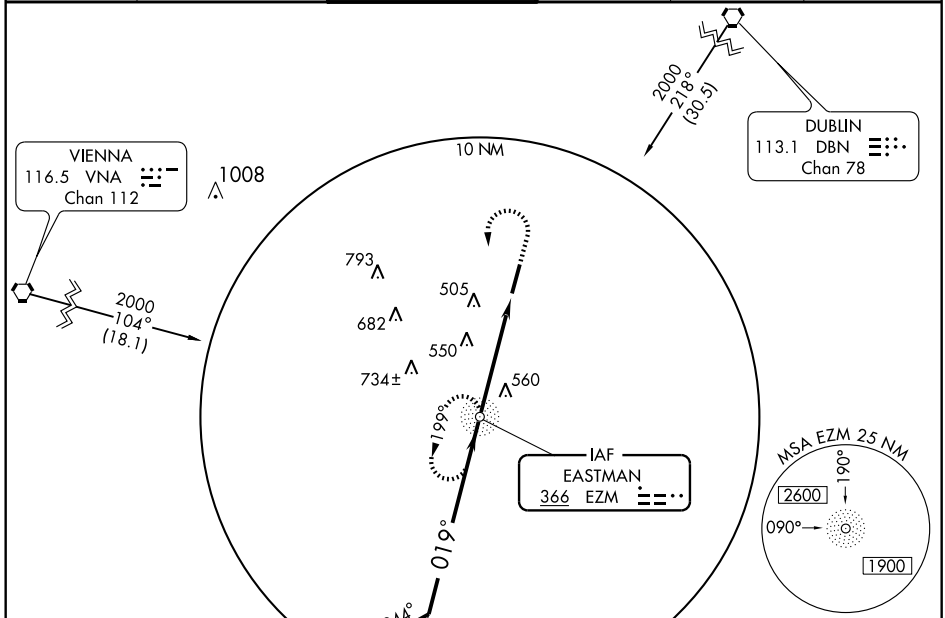
# NDB RWY 2

EASTMAN/HEART OF GEORGIA RGNL (E2M)

NDB E2M <b>366</b>	APP CRS <b>019°</b>	Rwy Idg TDZE Apt Elev	<b>6506</b> <b>300</b> <b>304</b>
-----------------------	------------------------	-----------------------------	---

<p>When local altimeter setting not received, use Dublin altimeter setting and increase all MDA's 60 feet and S-2 Cats C and D visibility 1/4 mile, Circling Cat. C visibility 1/4 mile.</p>	<p>MALS R</p>	<p>MISSED APPROACH: Climb to 1500 then climbing left turn to 2000 direct E2M NDB and hold.</p>			
			<p>ATIS <b>119.425</b></p>	<p>ATLANTA APP CON * <b>124.2 279.6</b></p>	<p>EASTMAN TOWER * <b>124.55 (CTAF)</b></p>

ATIS <b>119.425</b>	ATLANTA APP CON * <b>124.2 279.6</b>	EASTMAN TOWER * <b>124.55 (CTAF)</b>	GND CON <b>121.175</b>	GCO <b>121.725</b>	UNICOM <b>123.0</b>
------------------------	---	---	---------------------------	-----------------------	------------------------



CATEGORY	A	B	C	D
S-2	900-3/4 600 (600-3/4)		900-1 600 (600-1)	900-1 1/2 600 (600-1 1/2)
CIRCLING	900-1 596 (600-1)		900-1 1/2 596 (600-1 1/2)	900-2 596 (600-2)

ELEV	304
20	
4500 X 100	
TWR	435±
TDZE	300
019°	4.6 NM from FAF
REIL Rwy 20	
HIRL Rwy 2-20	
FAF to MAP	4.6 NM
Knots	60 90 120 150 180
Min:Sec	4:36 3:04 2:18 1:50 1:32

# NDB RWY 2

SE-4, 22 OCT 2009 to 19 NOV 2009

SE-4, 22 OCT 2009 to 19 NOV 2009