

ILS or LOC RWY 2

EASTMAN/ HEART OF GEORGIA REGIONAL (E2M)

LOC I-HUV 109.55	APP CRS 019°	Rwy Idg 6506
		TDZE 300
		Apt Elev 304

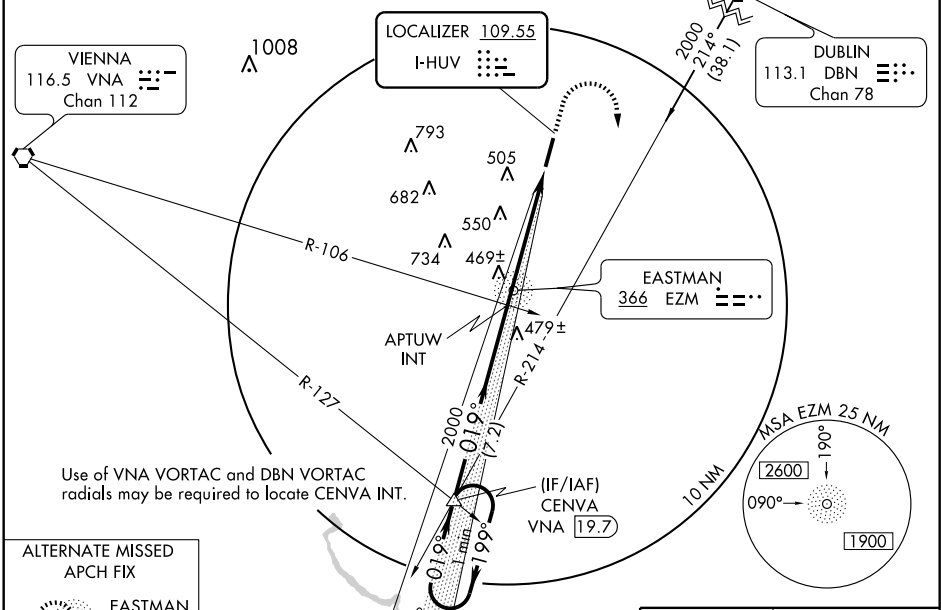
When local altimeter setting not received, use Dublin altimeter setting and increase DA to 552 feet and all MDAs 60 feet and S-LOC 2 Cat. D visibility ¼ mile.



MISSED APPROACH: Climb to 800 then climbing right turn to 2000 via heading 180° and DBN VORTAC R-214 to CENVA Int/19.7 DME and hold.

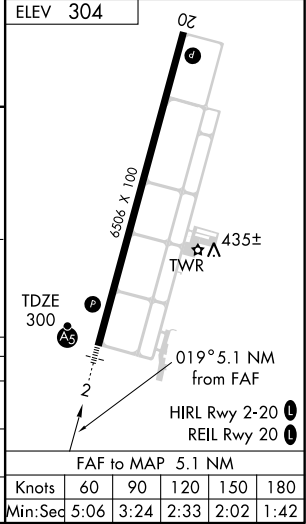
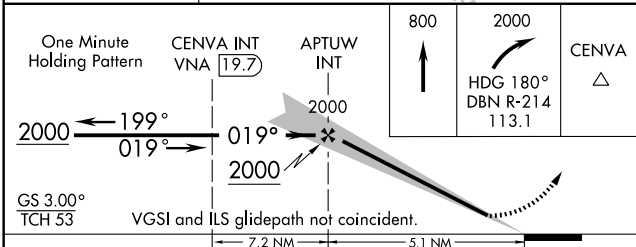
ATIS 119.425	ATLANTA APP CON ★ 124.2 279.6	EASTMAN TOWER ★ 124.55 (CTAF) 0	GND CON 121.175	GCO 121.725	UNICOM 123.0
------------------------	---	---	---------------------------	-----------------------	------------------------

NoPT for arrival at CENVA on V362 Northwest bound.



ALTERNATE MISSED APCH FIX

EASTMAN E2M 366



CATEGORY	A	B	C	D
S-ILS 2	500-½ 200 (200-½)			
S-LOC 2	720-½ 420 (500-½)	720-¾ 420 (500-¾)		
CIRCLING	760-1 456 (500-1)	820-1 516 (600-1)	820-1½ 516 (600-½)	860-2 556 (600-2)

SE-4, 22 OCT 2009 to 19 NOV 2009

SE-4, 22 OCT 2009 to 19 NOV 2009