

# VOR or GPS RWY 29

ALLEGAN / PADGHAM FIELD (35D)

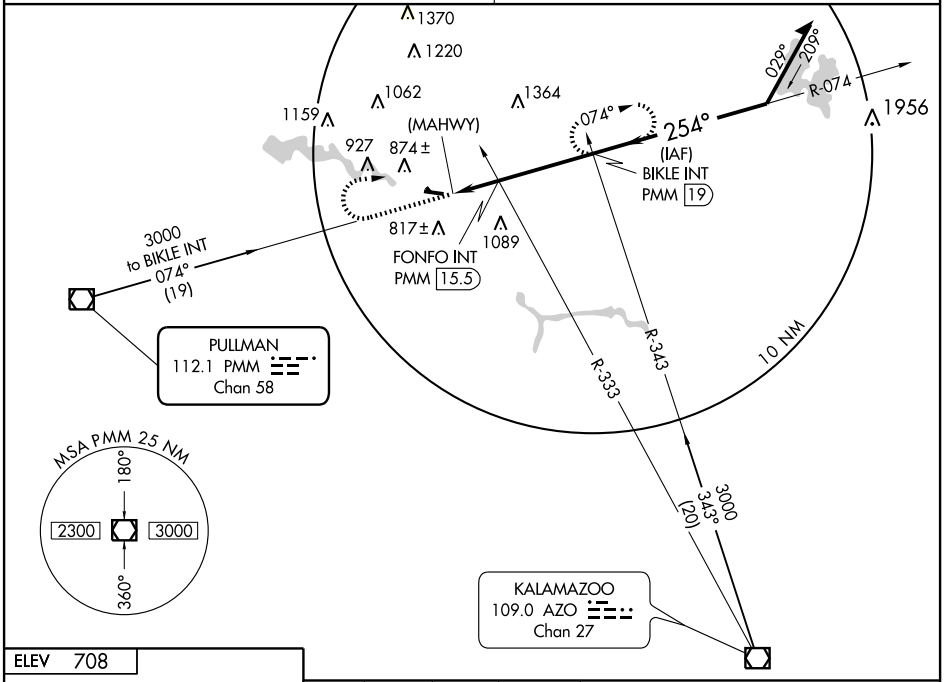
VOR/DME PMM <b>112.1</b> Chan <b>58</b>	APP CRS <b>254°</b>	Rwy Idg <b>4300</b> TDZE <b>704</b> Apt Elev <b>708</b>
---	------------------------	---

▽ Obtain local altimeter setting on CTAF; when not received, use Grand Rapids altimeter setting and increase all MDAs 100 feet and all visibilities ¼ mile.  
▲ NA

MISSED APPROACH: Climb to 3000 then right turn via PMM R-074 to BIKLE Int/PMM 19 DME and hold.

GRAND RAPIDS APP CON ★  
**128.4 257.6**

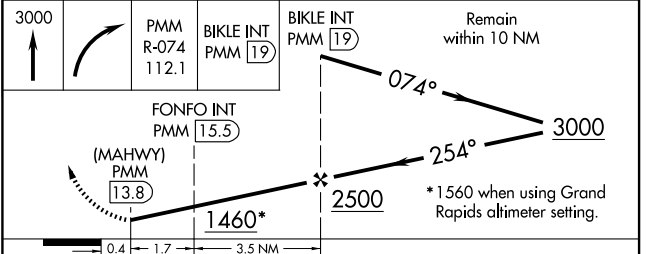
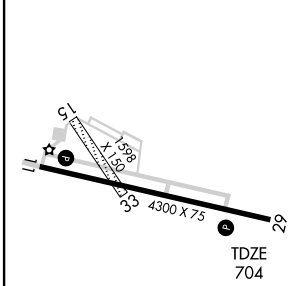
UNICOM  
**122.8 (CTAF)** 0



EC-1, 22 OCT 2009 to 19 NOV 2009

EC-1, 22 OCT 2009 to 19 NOV 2009

ELEV 708



REIL Rwy 29 0  
 REIL Rwy 11  
 MIRL Rwy 11-29 0

FAF to MAP 5.2 NM

Knots	60	90	120	150	180
Min:Sec	5:12	3:28	2:36	2:05	1:44

CATEGORY	FONFO INT MINIMUMS			D
	A	B	C	
S-29	1460-1 756 (800-1)	1460-1¼ 756 (800-1¼)	1460-2¼ 756 (800-2¼)	NA
CIRCLING	1460-1 752 (800-1)	1460-1¼ 752 (800-1¼)	1460-2¼ 752 (800-2¼)	NA
S-29	1400-1	696 (700-1)	1400-2 696 (700-2)	NA
CIRCLING	1400-1	692 (700-1)	1400-2 692 (700-2)	NA