

SOLDOTNA, ALASKA

AL-5464 (FAA)

NDB/DME OLT 346	APP CRS 246°	Rwy Idg TDZE Apt Elev	5000 107 108
Chan 106 (115.9)			

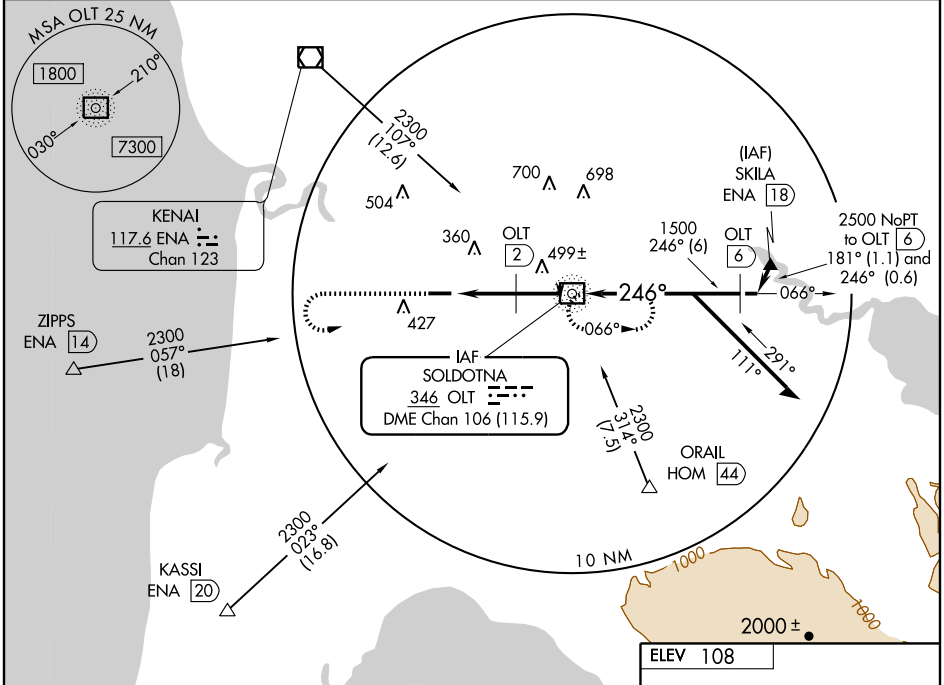
NDB RWY 25

SOLDOTNA (SXQ)(PASX)

⚠ Circling not authorized South of Rwy 7-25.

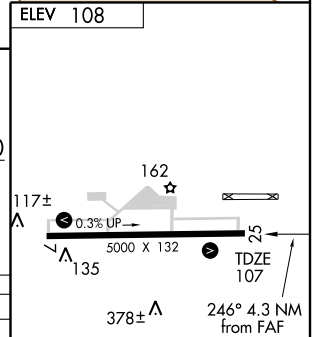
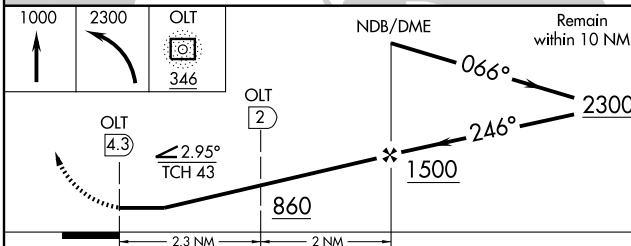
MISSED APPROACH: Climb to 1000 and then climbing left turn to 2300 direct OLT NDB/DME and hold.

AWOS-3 135.45	ANCHORAGE CENTER 125.7 379.1	CTAF 122.5
-------------------------	--	----------------------



AK, 22 OCT 2009 to 17 DEC 2009

AK, 22 OCT 2009 to 17 DEC 2009



CATEGORY	A	B	C	D
S-25	860-1 753 (800-1)	860-1¼ 753 (800-1¼)	860-2¼ 753 (800-2¼)	860-2½ 753 (800-2½)
CIRCLING	860-1 752 (800-1)	860-1¼ 752 (800-1¼)	860-2¼ 752 (800-2¼)	860-2½ 752 (800-2½)
DME MINIMA				
S-25	760-1 653 (700-1)	760-1¼ 653 (700-1¼)	760-2 653 (700-2)	760-2 653 (700-2)
CIRCLING	760-1 652 (700-1)	760-1¼ 652 (700-1¼)	760-2 652 (700-2)	760-2 652 (700-2)

MIRL Rwy 7-25

FAF to MAP 4.3 NM

Knots	60	90	120	150	180
Min:Sec	4:18	2:52	2:09	1:43	1:26

SOLDOTNA, ALASKA
Amdt 2 09183

60°29'N-151°02'W

SOLDOTNA (SXQ)(PASX)

NDB RWY 25